

Welcome Home!



Designer Series Home
+ Included Luxury Options

OFFERED AT

\$319,700



LIVE IN

13702 E. Morris Cir.
Wichita, KS 67230



STOCKTON
Floor Plan

3
Bedrooms

2
Bathrooms

3
Car Court-Yard Garage

1,621
Total Finished Sq.Ft.

Featured Luxury Options:

- Irrigation Well, Sprinkler System & Sod \$10,950
- Outdoor Living Space with Composite Deck \$7,078
- Walkout Basement with Framing, Electric, Wet Bar Rough-In & Tub Set for Easy Finishing \$25,090
- Granite & Quartz Countertops Throughout \$2,950
- Wood Laminate in Entry, Living, Dining & Kitchen \$2,850
- Luxury Kitchen Cabinets, Appliances & Finishes \$6,520
- Upgraded Master Bathroom Suite \$8,069
- Additional Luxury Items (Curb Appeal Upgrades, Satin Paint, Drop Zone, Lighting Package, etc.) \$21,078

LUXURY OPTIONS TOTAL: \$84,585

The Community Features:

- Community Pool
- Walking Paths
- Established Trees
- Large Stocked Ponds
- East Wichita Shopping
- Convenient Location

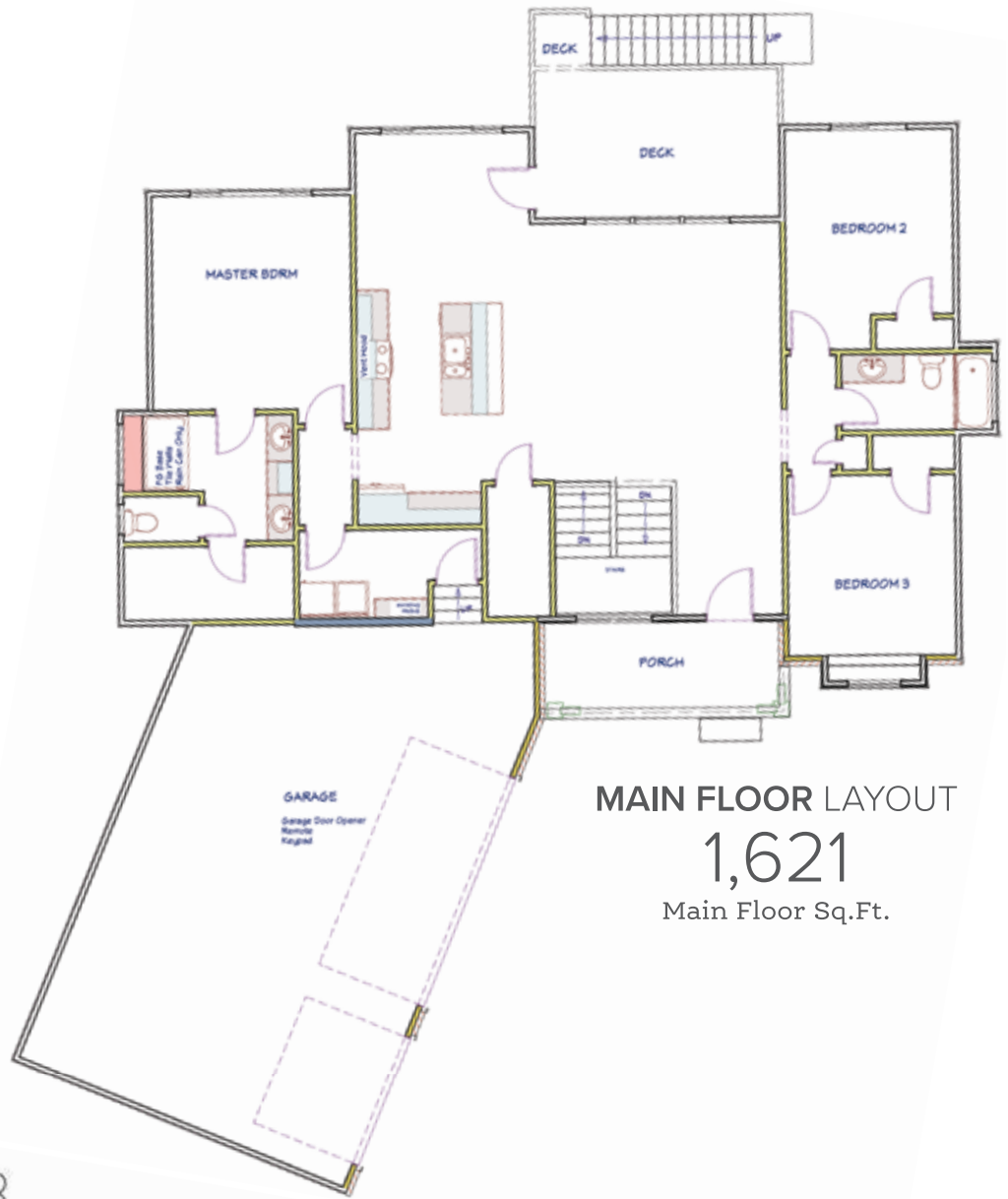


Contact Your New Home Specialist To Learn More: *Jon Nevarez* • (316) 347.3687 • Jon@MillerFamilyHomes.com

THE STOCKTON Floor Plan

FEATURES:

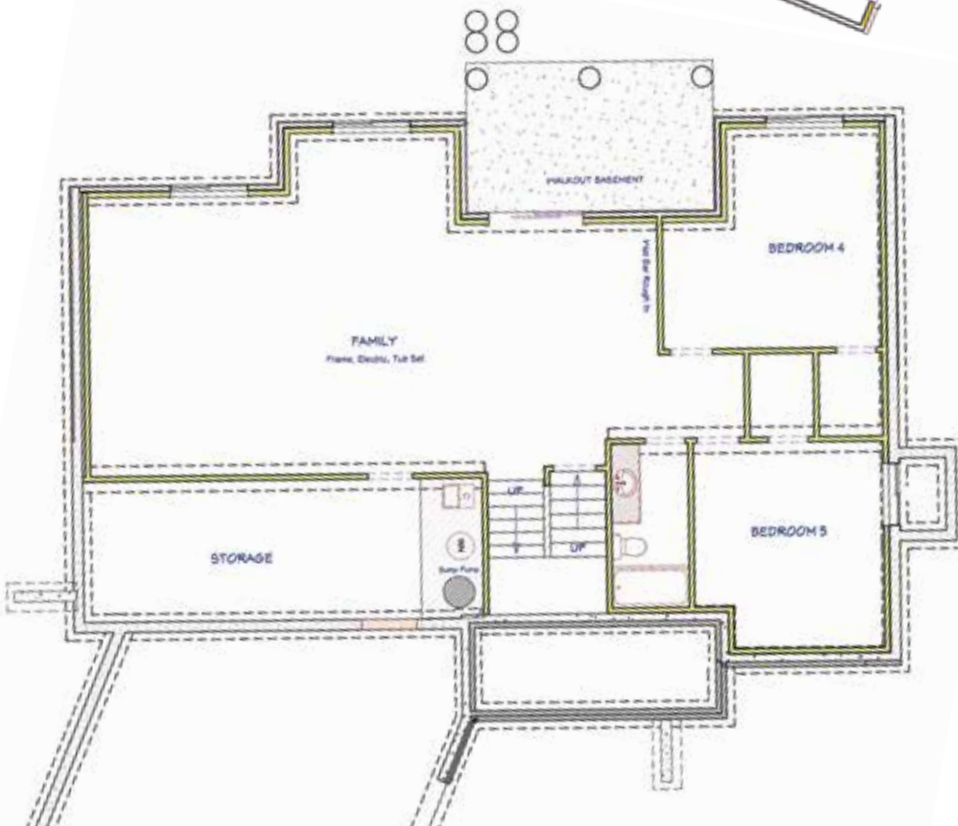
- Open-Concept Floor Plan
- 3 Car Court Yard Garage
- 10 ft. Ceilings in Main Living and Master Suite
- Drop Zone in Main Floor Laundry Off Garage Entry
- Large Walk-In Pantry
- Walk-In Master Closet with Off-Season Storage
- 92% Energy Efficient Furnace
- Passive Radon Vent
- 1-Year Builder Warranty



MAIN FLOOR LAYOUT

1,621

Main Floor Sq.Ft.



BASEMENT LAYOUT

1,271

Possible Finished
Basement Sq.Ft.

- Large Family Room
- 2 Additional Bedrooms
- 1 Additional Bathroom
- Dedicated Storage

Jon Nevarez
NEW HOME SPECIALIST

C | (316) 670.9736

Jon@MillerFamilyHomes.com

