

Welcome Home!



Designer Series Home  
+ Included Luxury Options

Village Estates

1201 Prairie Hill  
Park City, KS 67219



WESTBURY

Floor Plan

4

Bedrooms

3

Bathrooms

3

Car Garage

2,399

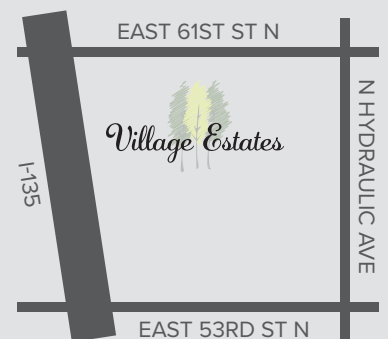
Total Finished Sq.Ft.

### Why You Will Love This Home

- Sprinkler System & Sod Included
- LVP Flooring Throughout the Main Floor with Carpet in the Bedrooms & Carpet in the Basement + LVP in the Bathroom
- Dedicated Drop Zone Through the Owner's Entry from the 3-Car Garage
- 10' Ceilings in the Main Living Area & Master Suite
- Walk-In Pantry with 2' Prep Counter
- Master Suite Features a Walk-In Closet with Off-Season Storage
- Dedicated Storage Spaces Throughout
- Finished Daylight Basement Complete with a Walk-Up Bar
- Features Include: Energy Efficient Pella® Windows, Honeywell® Wi-Fi Thermostat, Chamberlain® myQ® Smart Garage Door Opener, Better Indoor Air Quality & a Cooktop Vented Outside
- 1-Year Builder Warranty

### Community Benefits

- Quiet Suburban Area
- Established Trees
- Large Stocked Fishing Ponds
- Close To Shopping & Dining
- Convenient Location
- Easy Access To I-135

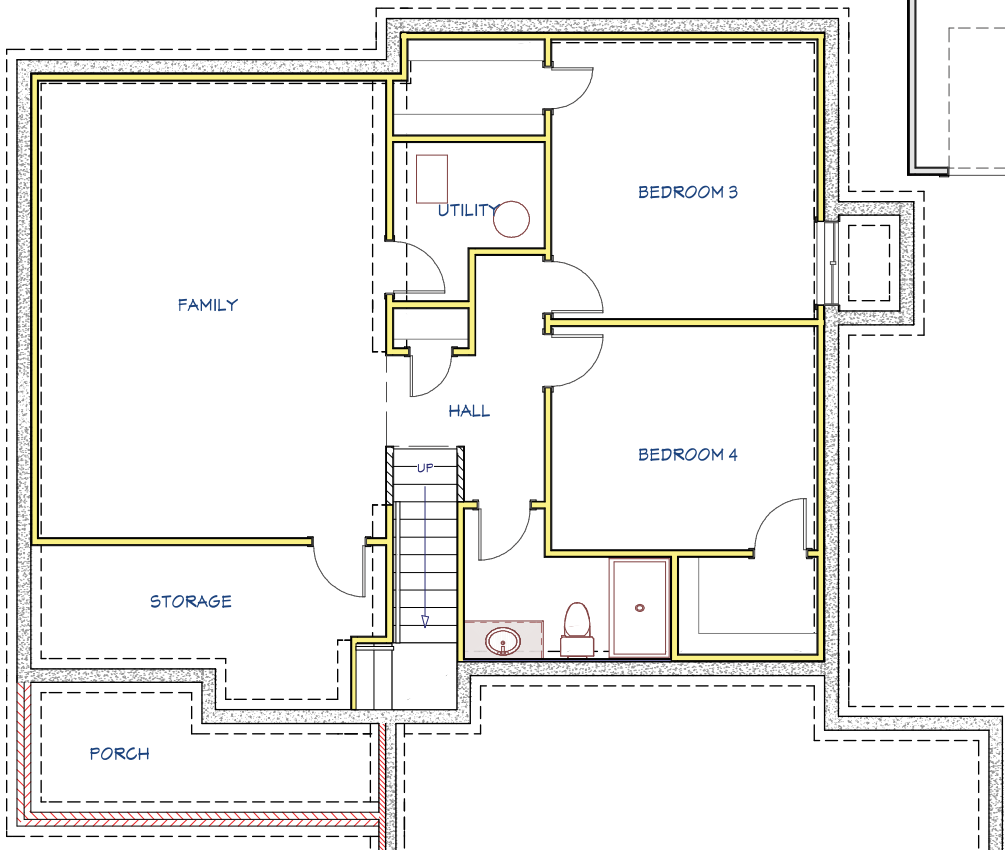
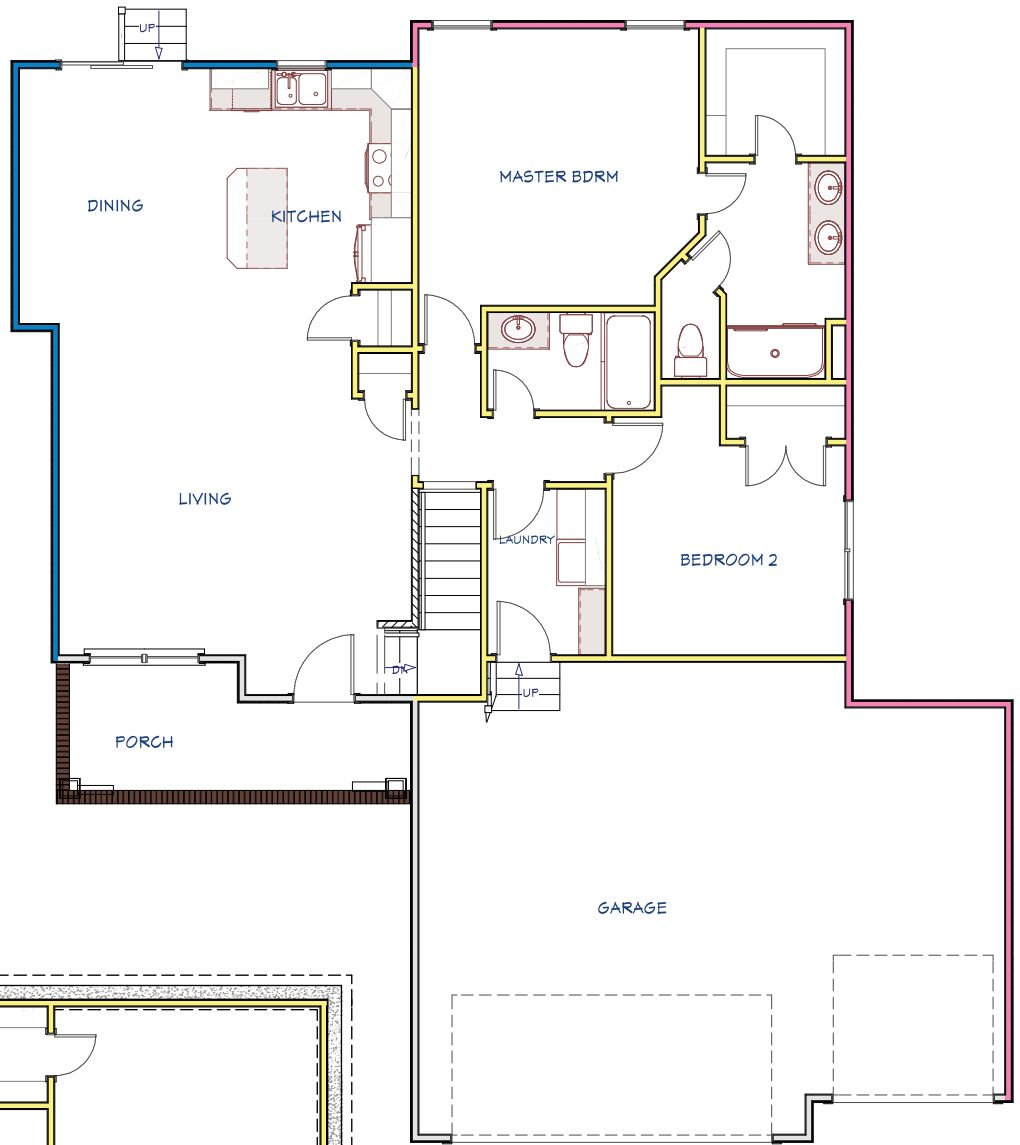


Contact Your New Home Specialist To Learn More: **Jenny Castro** • (316) 252.9199 • [Jenny@MillerFamilyHomes.com](mailto:Jenny@MillerFamilyHomes.com)

# THE WESTBURY Floor Plan

## MAIN FLOOR LAYOUT

1,371  
Main Floor Sq.Ft.



**BASEMENT LAYOUT**  
1,028  
Finished Basement Sq.Ft.

Disclaimer: The information contained herein is deemed reliable but cannot be guaranteed as to its accuracy. Current prices may change without notice and differ from what is indicated here. Floor plans, photos and graphics are for illustrative purposes and are only intended to be used as a guide. Illustrations may include upgrades and optional features. All information including square footage, bedrooms, bathroom and dimensions may vary from what is indicated here. We recommend to the buyer that any information of special interest, should be obtained through independent verification.

*Jenny Castro*  
NEW HOME SPECIALIST

C | (316) 252.9199  
Jenny@MillerFamilyHomes.com

