

Welcome Home!



Designer Series Home
+ Included Luxury Options



2716 S. Prescott Ct.
Wichita, KS 67215



LEAWOOD
Floor Plan

3
Bedrooms

2.5
Bathrooms

3
Car Garage

2,303
Total Finished Sq.Ft.

Why You Will Love This Home

- Irrigation Well, Sprinkler System & Sod
- Enhanced Outdoor Living w/ Covered Composite Deck
- Quartz Countertops Throughout
- Wood Laminate in Entry, Living, Dining & Kitchen
- Luxury Kitchen Appliances, Cabinets, Features and Finishes
- Designer Master Bedroom & Bathroom Suite with Walk-In Closet
- Owner's Entry Features a Pet Center Complete with a Washing Station, Dedicated Drop Zone & Powder Bath
- Luxury Lighting Package
- Unfinished View-Out Basement
- Massive Great Room with Windowed Staircase Feature
- Designer Features Throughout (Entertainment Center, Built-In's & More!)
- 92% Energy Efficient Furnace
- Passive Radon Vent
- 1-Year Builder Warranty

Community Benefits

- Large Zero-Entry Salt Water Swimming Pool
- Playground
- Large Stocked Pond
- Goddard Schools
- West Wichita Shopping
- Convenient Location

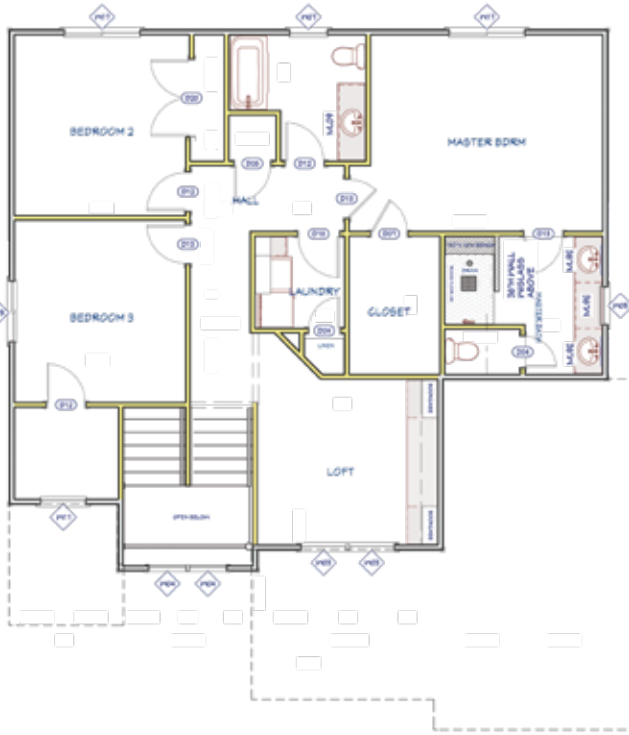


THE LEAWOOD Floor Plan

2ND FLOOR LAYOUT

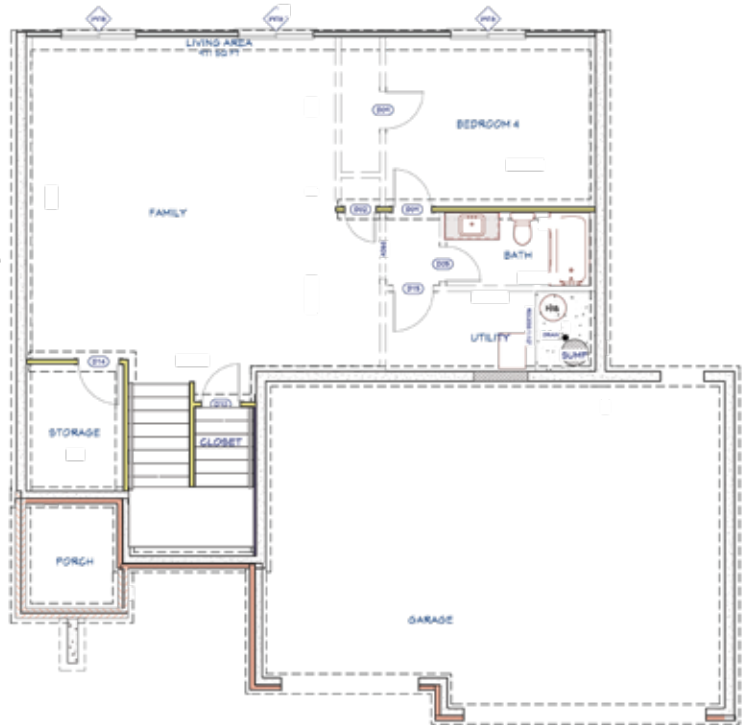
1,223

2nd Floor Sq.Ft.



BASEMENT LAYOUT
820

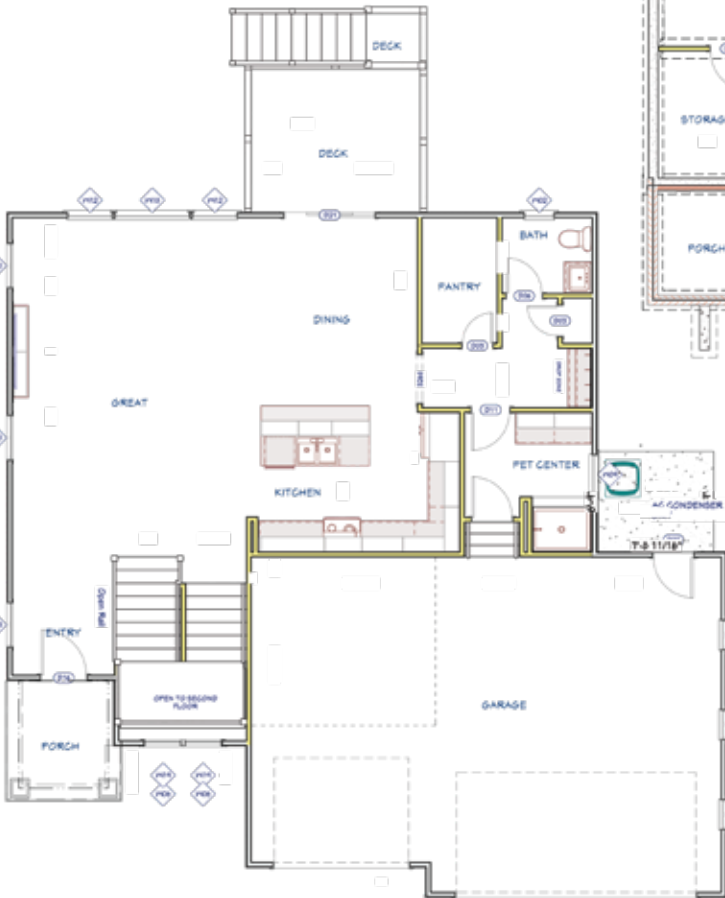
Possible Finished Basement Sq.Ft.



MAIN FLOOR LAYOUT

1,080

Main Floor Sq.Ft.



Disclaimer: The information contained herein is deemed reliable but cannot be guaranteed as to its accuracy. Current prices may change without notice and differ from what is indicated here. Floor plans, photos and graphics are for illustrative purposes and are only intended to be used as a guide. Illustrations may include upgrades and optional features. All information including square footage, bedrooms, bathroom and dimensions may vary from what is indicated here. We recommend to the buyer that any information of special interest, should be obtained through independent verification.

Scott Darrenkamp
NEW HOME SPECIALIST

C | (316) 250.4122

ScottD@MillerFamilyHomes.com

