

Welcome Home!



Designer Series Home
+ Included Luxury Options



706 S. Clear Creek St.
Wichita, KS 67230



PRESCOTT
Floor Plan

3
Bedrooms

2
Bathrooms

3
Car Garage

1,576
Total Finished Sq.Ft.

Why You Will Love This Home

- Irrigation Well, Sprinkler System & Sod
- Enhanced Outdoor Living w/ Covered Composite Deck
- Unfinished Walk-Out Basement w/ Wet Bar Rough In
- Quartz Countertops Throughout
- Wood Laminate in Entry, Living, Dining & Kitchen
- Upgraded Laundry Room & Garage Entry Drop Zone
- Luxury Kitchen Cabinets, Appliances & Finishes + Walk-In Pantry
- Enhanced Master Bedroom & Bathroom Suite
- Walk-In Master Closet with Off-Season Storage
- Designer Touches (Stained Beams, Floating Shelves & More)
- Upgraded Curb Appeal
- 10 ft. Ceilings in Main Living & Master Suite
- 92% Energy Efficient Furnace
- Passive Radon Vent
- 1-Year Builder Warranty

Community Benefits

- Community Pool
- Walking Paths
- Established Trees
- Large Stocked Ponds
- East Wichita Shopping
- Convenient Location



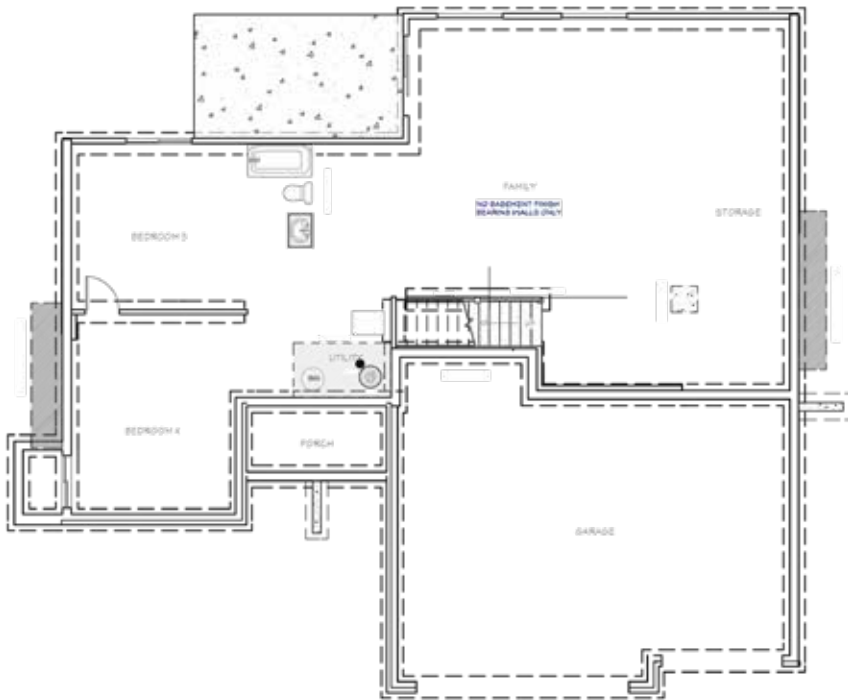
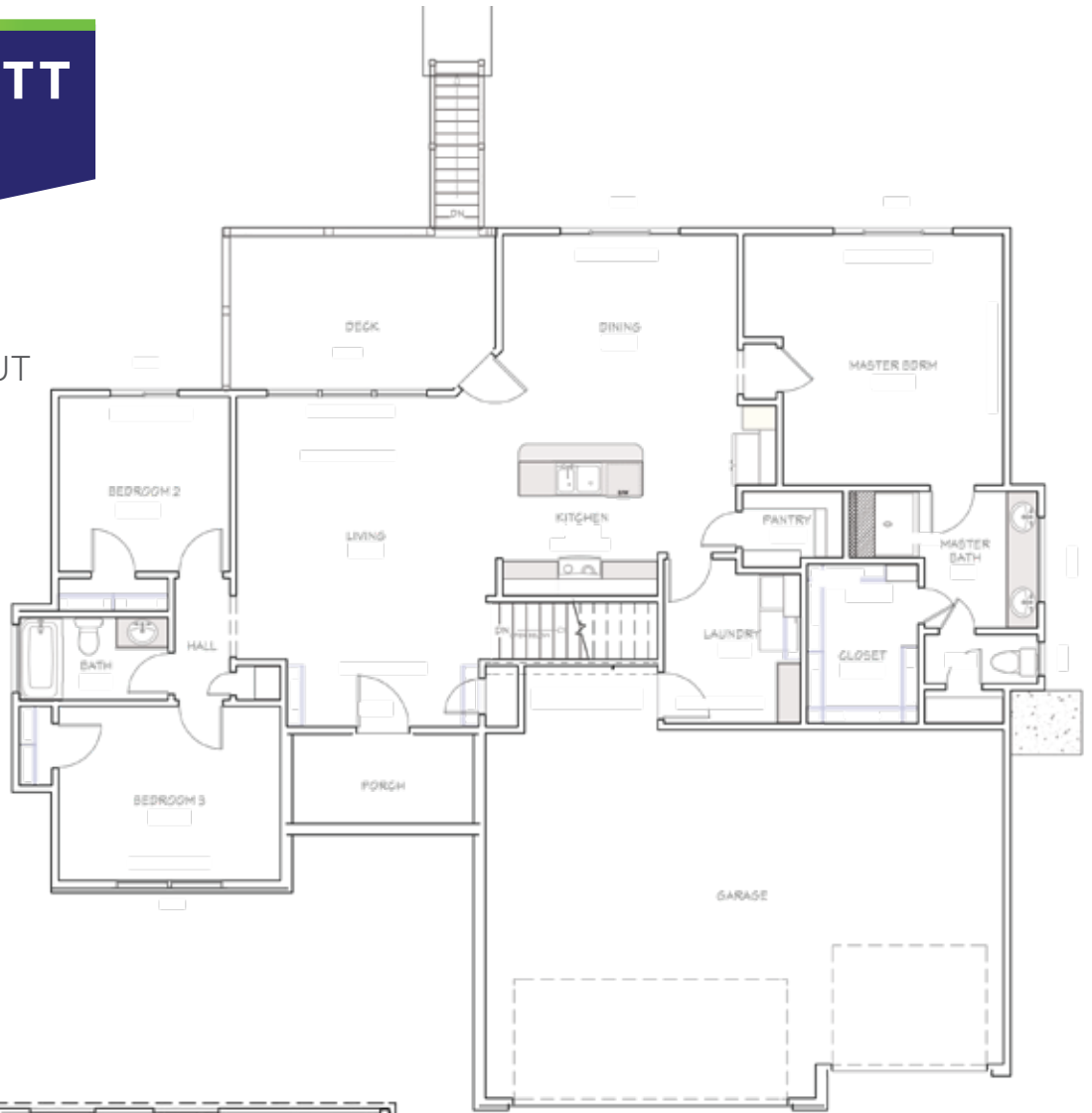
Contact Your New Home Specialist To Learn More: [Jon Nevarez](mailto:Jon.Nevarez@MillerFamilyHomes.com) • (316) 347.3687 • Jon@MillerFamilyHomes.com

THE PRESCOTT

Floor Plan

MAIN FLOOR LAYOUT

1,576
Main Floor Sq.Ft.



BASEMENT LAYOUT

1,533
Possible Finished
Basement Sq.Ft.

Disclaimer: The information contained herein is deemed reliable but cannot be guaranteed as to its accuracy. Current prices may change without notice and differ from what is indicated here. Floor plans, photos and graphics are for illustrative purposes and are only intended to be used as a guide. Illustrations may include upgrades and optional features. All information including square footage, bedrooms, bathroom and dimensions may vary from what is indicated here. We recommend to the buyer that any information of special interest, should be obtained through independent verification.

Jon Nevarez
NEW HOME SPECIALIST

C | (316) 670.9736
Jon@MillerFamilyHomes.com

