

Welcome Home!



Designer Series Home
+ Included Luxury Options

Village Estates

5835 Ashford
Park City, KS 67219



ROSEWOOD

Floor Plan

5

Bedrooms

3

Bathrooms

3

Car Side-Entry Garage

2,474

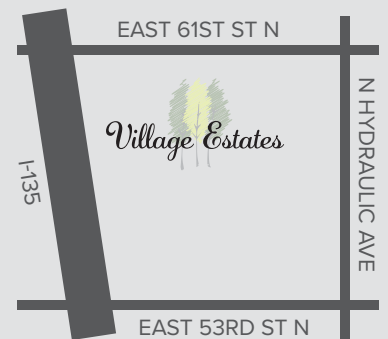
Total Finished Sq.Ft.

Why You Will Love This Home

- Sprinkler System & Sod Included
- LVP Flooring Throughout the Main Floor with Carpet in the Bedrooms & Carpet in the Basement + LVP in the Bathroom
- Dedicated Drop Zone Through the Owner's Entry from the 3-Car Side-Entry Garage
- 10' Ceilings in the Main Living Area
- Large Kitchen Island Plus a Large Walk-In Pantry
- Master Suite Features a Walk-In Closet
- Dedicated Storage Spaces Throughout
- Finished View-Out Basement Adds a Large Family Room, Flex Space, Storage Room, Bathroom and 2 Bedrooms
- Features Include: Energy Efficient Pella® Windows, Honeywell® Wi-Fi Thermostat & Dual-Zoned HVAC System, Chamberlain® myQ® Smart Garage Door Opener, Better Indoor Air Quality & a Cooktop Vented Outside Plus a 1-Year Builder Warranty

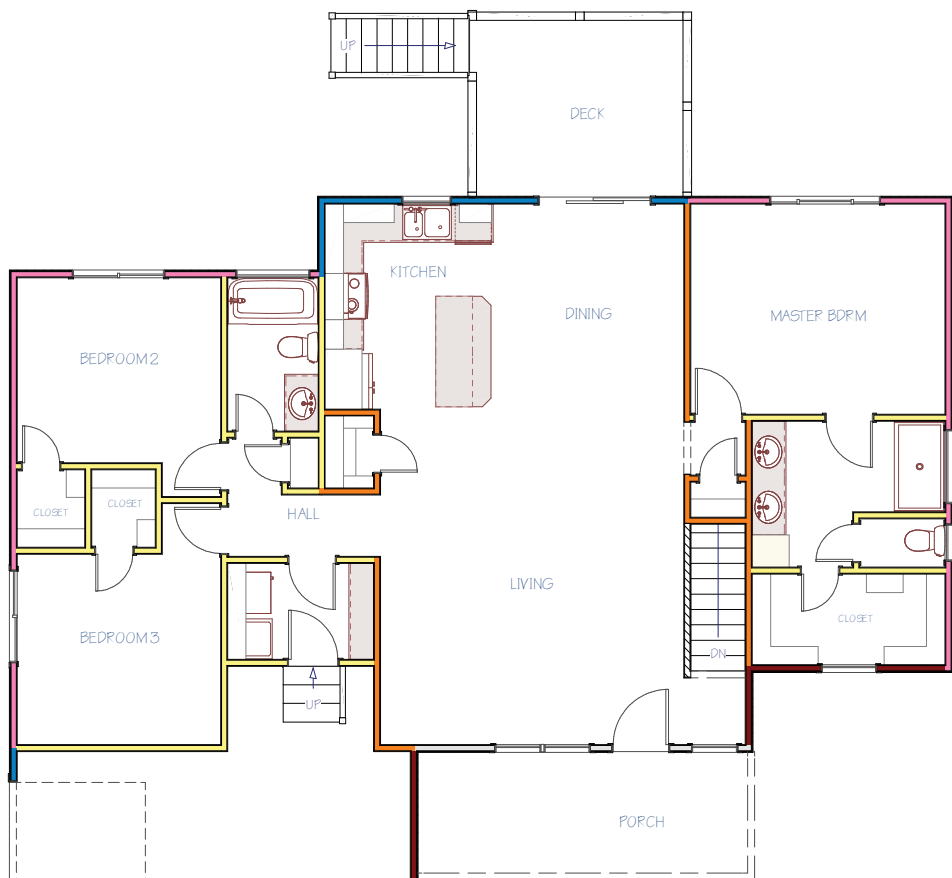
Community Benefits

- Quiet Suburban Area
- Established Trees
- Large Stocked Fishing Ponds
- Close to Shopping & Dining
- Convenient Location
- Easy Access To I-135



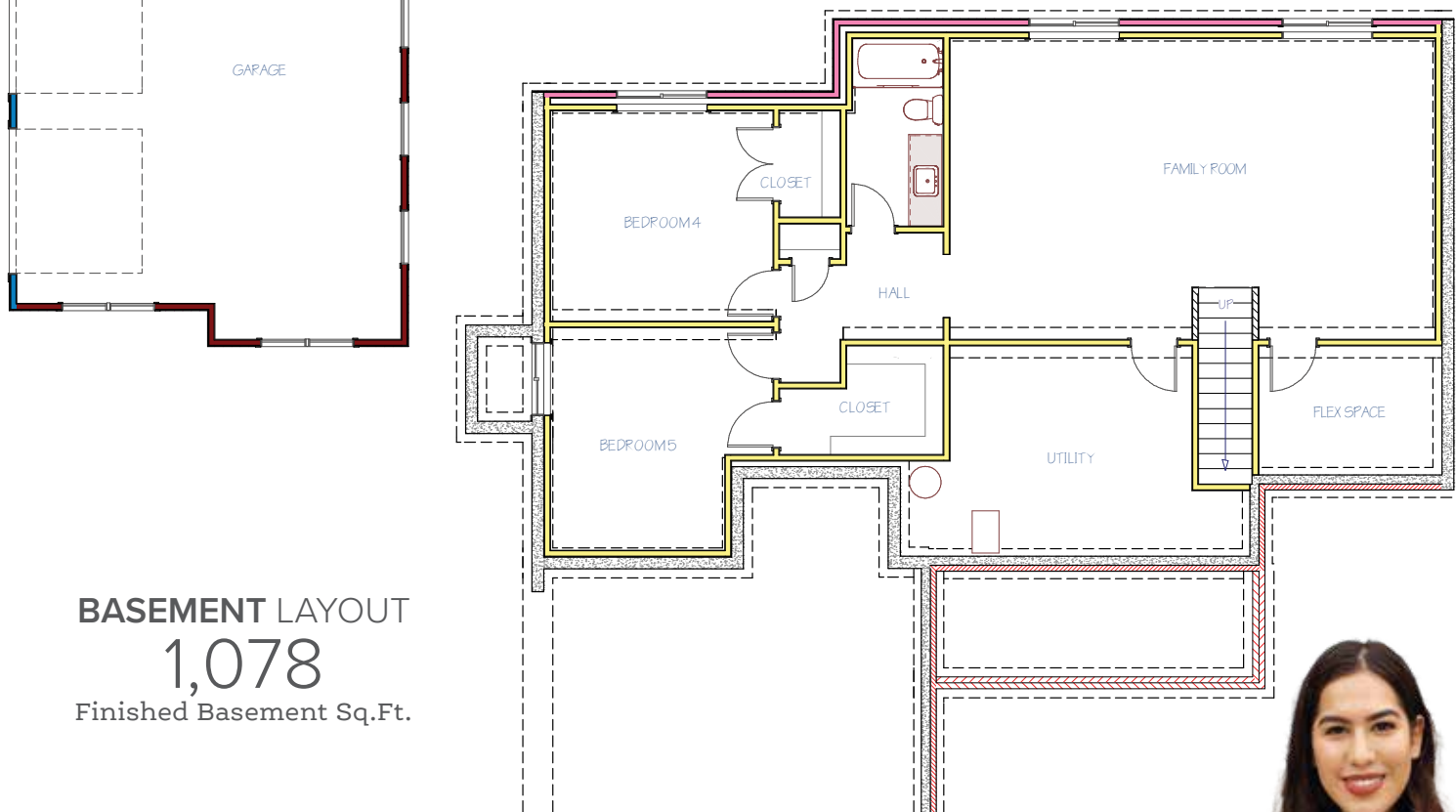
Contact Your New Home Specialist to Learn More: **Jenny Castro** • (316) 252.9199 • Jenny@MillerFamilyHomes.com

THE ROSEWOOD *Floor Plan*



MAIN FLOOR LAYOUT

1,396
Main Floor Sq.Ft.



BASEMENT LAYOUT

1,078

Finished Basement Sq.Ft.

Disclaimer: The information contained herein is deemed reliable but cannot be guaranteed as to its accuracy. Current prices may change without notice and differ from what is indicated here. Floor plans, photos and graphics are for illustrative purposes and are only intended to be used as a guide. Illustrations may include upgrades and optional features. All information including square footage, bedrooms, bathroom and dimensions may vary from what is indicated here. We recommend to the buyer that any information of special interest, should be obtained through independent verification.

Jenny Castro
NEW HOME SPECIALIST

C | (316) 252.9199
Jenny@MillerFamilyHomes.com

