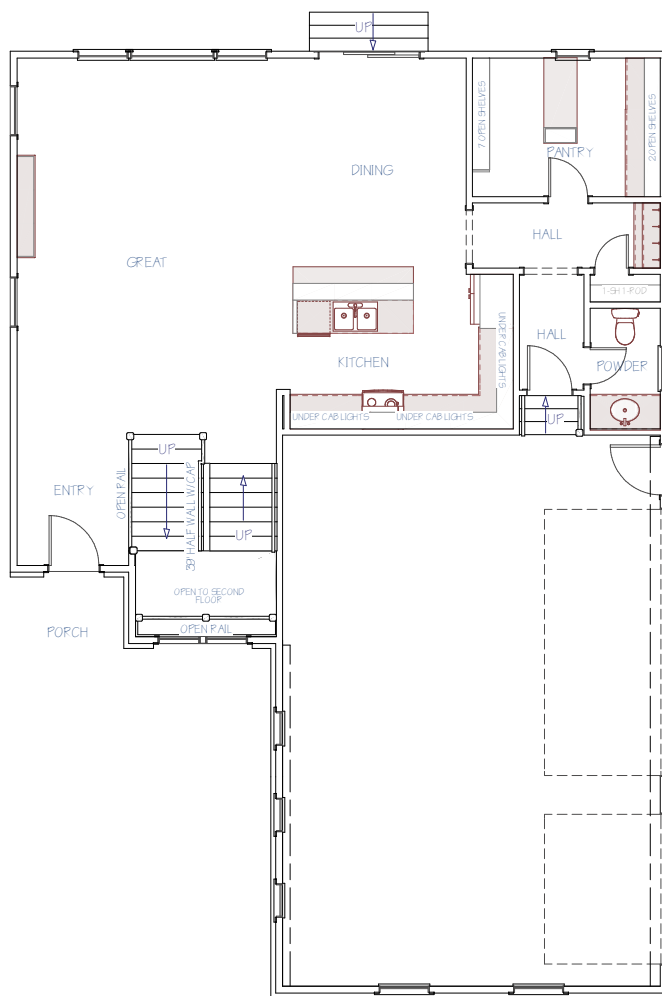
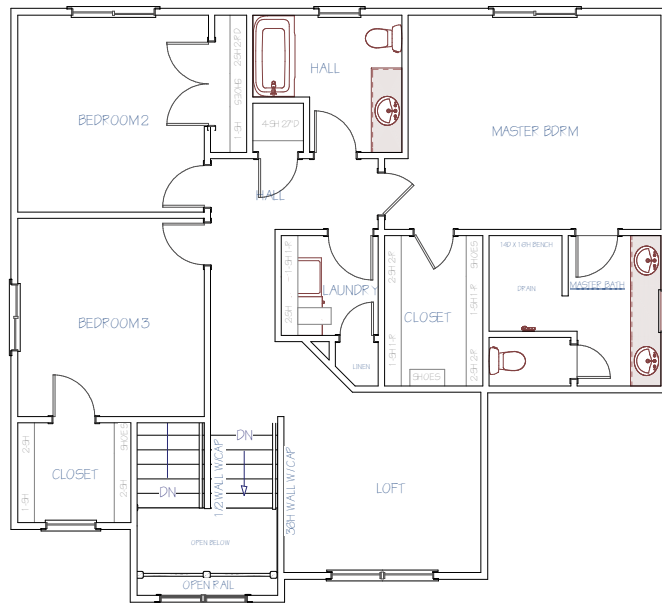
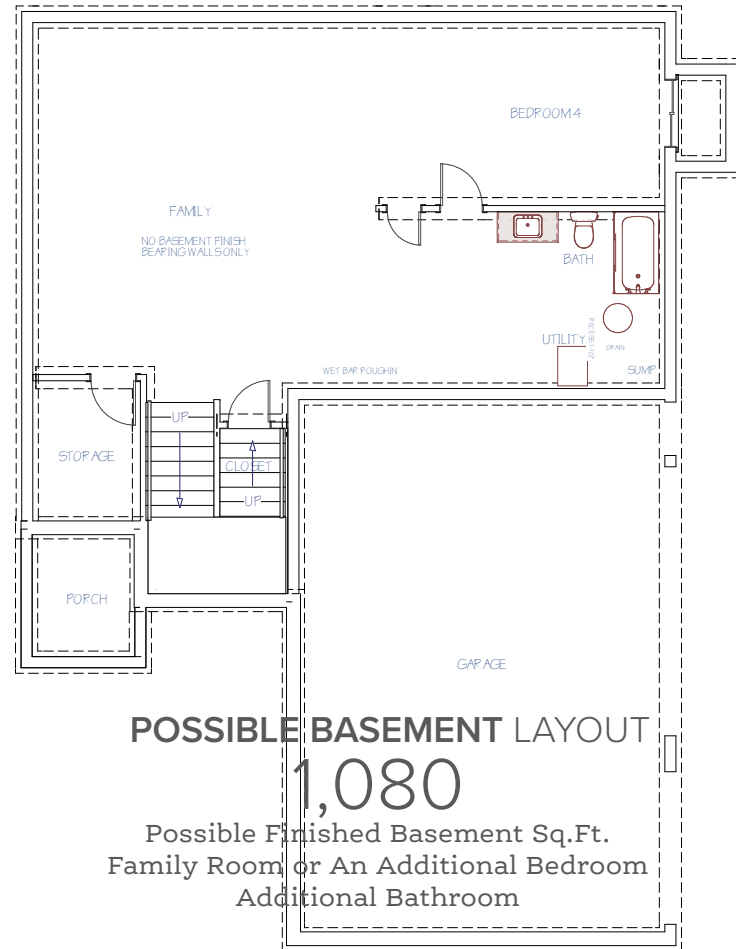


**2ND FLOOR LAYOUT**  
**1,115**  
2nd Floor Sq.Ft.



**MAIN FLOOR LAYOUT**  
**1,060**  
Main Floor Sq.Ft.

**THE LEAWOOD**  
**BUTLER'S PANTRY**  
*Floor Plan*



*Welcome Home!*

*Designer Series Home*  
+ Included Luxury Options



2740 S. Prescott Ct.  
Wichita, KS 67215



**LEAWOOD** | **3** | **2.5** | **3** | **2,175**  
Floor Plan | Bedrooms | Bathrooms | Car Garage | Total Finished Sq.Ft.

*Why You Will Love This Home*

- Irrigation Well, Sprinkler System & Sod Included
- Gorgeous Modern Farmhouse with Great Curb Appeal
- Granite & Quartz Countertops Throughout
- Wood Laminate in Entry, Living, Dining & Kitchen
- Luxury Kitchen Features and Finishes + Unique Butler's Pantry
- Designer Master Suite Features a Walk-In Tile Shower, Private Commode, Walk-In Closet & Luxury Finishes
- Dedicated Drop Zone
- Enjoy Outdoor Entertaining on the Covered Composite Deck
- Features: Energy Efficient Pella® Windows, Honeywell® Wi-Fi Thermostat, Chamberlain® myQ® Smart Garage Door Opener, Better Indoor Air Quality & a Cooktop Vented to the Outside
- Unfinished Daylight Basement
- 1-Year Builder Warranty

*The Community Features:*

- Salt Water Swimming Pool
- Playground
- Large Stocked Pond
- Goddard Schools
- West Wichita Shopping
- Convenient Location



Disclaimer: The information contained herein is deemed reliable but cannot be guaranteed as to its accuracy. Current prices may change without notice and differ from what is indicated here. Floor plans, photos and graphics are for illustrative purposes and are only intended to be used as a guide. Illustrations may include upgrades and optional features. All information including square footage, bedrooms, bathroom and dimensions may vary from what is indicated here. We recommend to the buyer that any information of special interest, should be obtained through independent verification.

*Scott Darrenkamp*  
NEW HOME SPECIALIST  
C | (316) 250.4122  
ScottD@MillerFamilyHomes.com



Contact Your New Home Specialist To Learn More: *Scott Darrenkamp* • (316) 250.4122 • ScottD@MillerFamilyHomes.com



# DESIGNER Details



2140 Prescott Ct - Leawood Traditional  
Exterior Paint Selection

- Body: Westchester Gray SW2849
- Accent: Peaks & Garage Doors Gale Force SW7605
- Accent: Salute SW7582
- Trim: Pure White SW7005
- Brick: Portsmouth



SUPPLIER ACCENT LIGHTING: <http://www.accentlightinginc.com/>