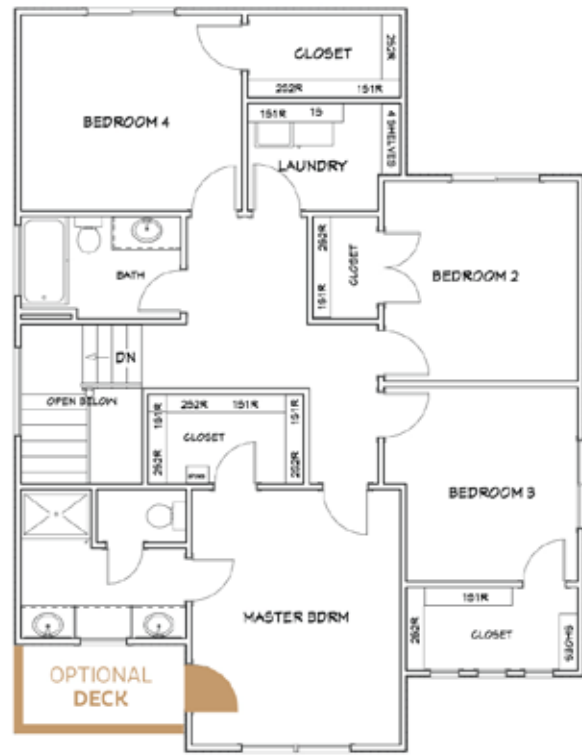
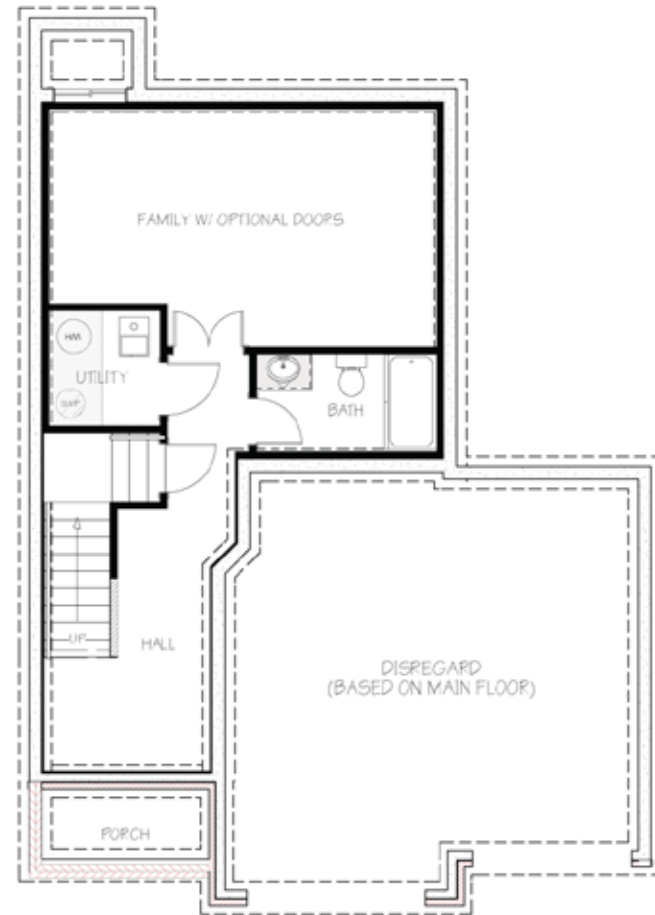


2ND FLOOR LAYOUT  
1,088  
2nd Floor Sq.Ft.

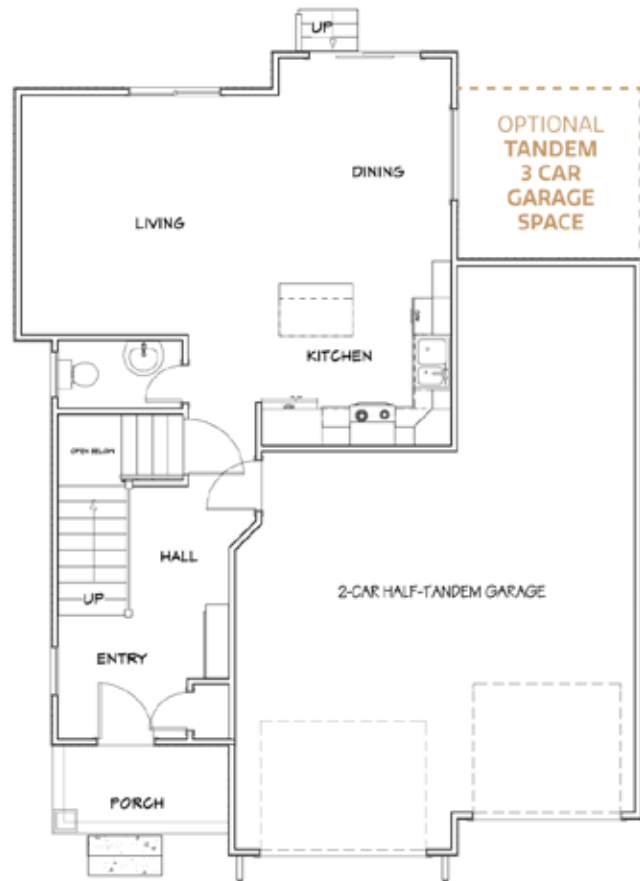


**THE MAPLE**  
*Floor Plan*

POSSIBLE BASEMENT LAYOUT  
626  
Unfinished Basement Sq.Ft.



MAIN FLOOR LAYOUT  
657  
Main Floor Sq.Ft.



*Welcome Home!*

*Designer Series Home*  
+ Included Luxury Options



14107 E. Laguna St.  
Wichita, KS 67230



MAPLE | 4 | 2.5 | 2 | 1,745  
Floor Plan | Bedrooms | Bathrooms | Car Garage + Extra | Total Finished Sq.Ft.

*Why You Will Love This Home*

- Gorgeous Modern Farmhouse Elevation with Great Curb Appeal
- Low Maintenance Composite Deck, Sprinkler System & Sod
- Quartz & Granite Countertops Throughout
- LVP Floors in Entry, Living, Dining & Kitchen
- Easy-to-Clean Vinyl Floors in the Bathrooms & Laundry Room
- Open-Concept Main Living Area is Gorgeous & Functional
- The Suite Features a Tray Ceiling, 2nd-Story Covered Deck, Walk-In Closet, Huge Vanity, a Water Closet & Walk-In Shower
- All the Bedrooms & Laundry Room are on the Same Floor
- Potential for More Space in the Unfinished View-Out Basement
- Features: Energy Efficient Pella® Windows, Honeywell® Wi-Fi Thermostat, Chamberlain® myQ® Smart Garage Door Opener, 92% Energy Efficient Furnace, Better Indoor Air Quality & a Cooktop Vented to the Outside
- 1-Year Builder Warranty

*Community Benefits*

- Community Pool
- Walking Paths
- Established Trees
- Large Stocked Ponds
- East Wichita Shopping
- Convenient Location



Disclaimer: The information contained herein is deemed reliable but cannot be guaranteed as to its accuracy. Current prices may change without notice and differ from what is indicated here. Floor plans, photos and graphics are for illustrative purposes and are only intended to be used as a guide. Illustrations may include upgrades and optional features. All information including square footage, bedrooms, bathroom and dimensions may vary from what is indicated here. We recommend to the buyer that any information of special interest, should be obtained through independent verification.

*Jon Nevarez*  
NEW HOME SPECIALIST  
C | (316) 670.9736  
Jon@MillerFamilyHomes.com



Contact Your New Home Specialist To Learn More: *Jon Nevarez* • (316) 347.3687 • Jon@MillerFamilyHomes.com

**DESIGNER**  
*Details*



**EXTERIOR**



**BODY: AGREEABLE GRAY SW7029**

**TRIM (AROUND WINDOWS, GARAGE, FRONT DOOR, TRIM OF POST**

**TRIM: ROOF LINE FASCIA & FRONT DOOR: BLACK FOX SW7020**

**WALLS: AESTHETIC WHITE SW7035**

**TRIM & DOORS: PURE WHITE SW7005**

**ALL DROP ZONE COLOR:  
MINDFUL GRAY SW7016**



**OWNER'S SUITE**



**KITCHEN**



**HALL BATH**