

BIRKSHIRE COURTYARD  
PLAN

MAIN FLOOR

1,404  
SQ. FT.

3  
BEDROOMS

2  
BATHROOMS

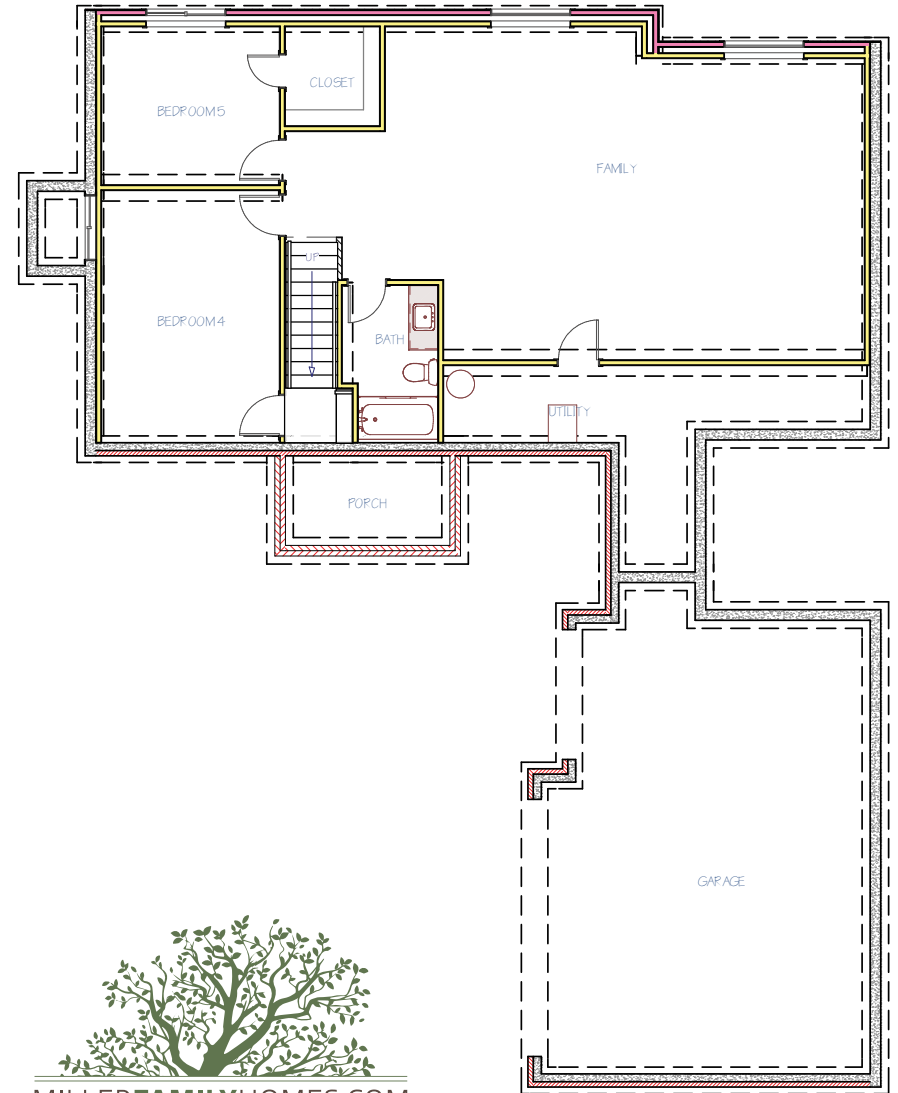


POSSIBLE BASEMENT

981  
FINISHED SQ. FT.

2  
BEDROOMS

1  
BATHROOM



Disclaimer: Please note the floor plan is for illustrative purposes and is to be used as a guide only. The illustrations may include upgrades and optional features. Final square feet, bedrooms and bathrooms may vary from what is indicated here.

# BIRKSHIRE COURTYARD ARCHITECTURAL STYLES

## TRADITIONAL



## FEATURES

- Open-Concept Floor Plan
- 10' Ceilings in Main Living & 9' Ceilings in Master Suite
- 3-Car Courtyard-Style Garage
- "Breezeway" Owner's Entry Features a Drop Zone, Laundry Space, Closet & Pantry Cabinets
- Kitchen Features a Large Island
- Master Suite Features a Private Commode, Walk-In Shower, Double Vanities and a Large Walk-In Closet
- Great Closet Space in Every Bedroom & Dedicated Storage Spaces Throughout
- Large Family Room in the Basement
- Multiple Healthy Home & Smart Home Features
- 1-Year Builder Warranty

## MODERN FARMHOUSE



MILLERFAMILYHOMES.COM

SCAN TO VISIT OUR WEBSITE  
FOR MORE FLOOR PLAN INFO



Disclaimer: Please note the floor plan is for illustrative purposes and is to be used as a guide only. The illustrations may include upgrades and optional features. Final square feet, bedrooms and bathrooms may vary from what is indicated here.