

**BIRKSHIRE**  
PLAN

**MAIN FLOOR**

**1,400**  
SQ. FT.

**3**  
BEDROOMS

**2**  
BATHROOMS

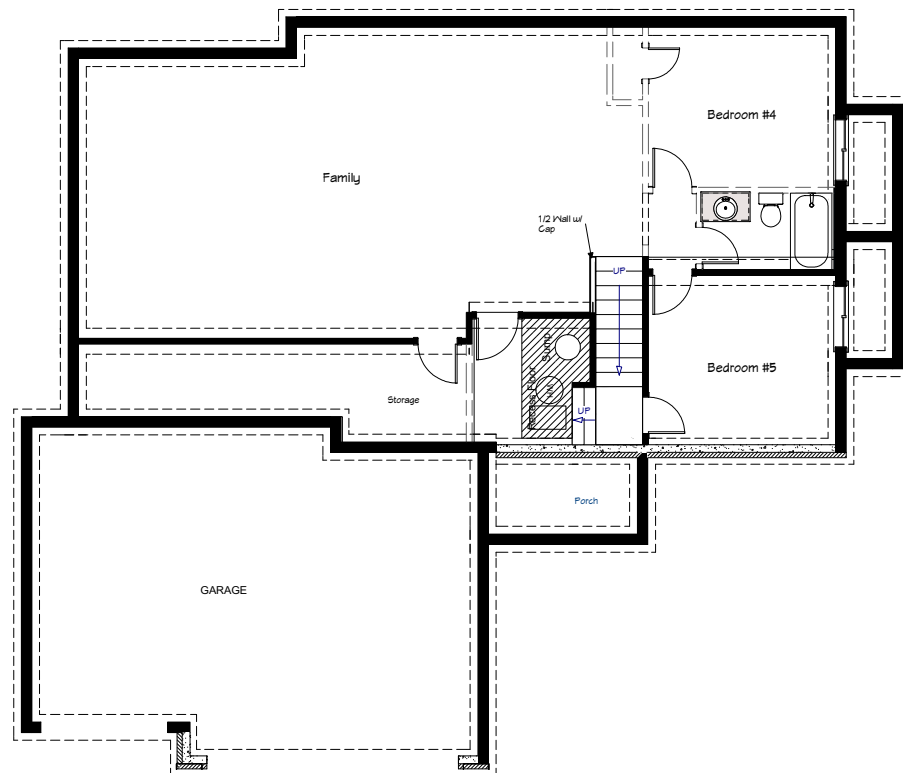


**POSSIBLE BASEMENT**

**1,045**  
FINISHED SQ. FT.

**2**  
BEDROOMS

**1**  
BATHROOM



**FEATURES**

- Open Floor Plan
- 10' Ceilings in Main Living Area
- Stainless Steel Appliances
- Walk-In Master Closet
- Multiple Healthy Home & Smart Home Features
- 1-Year Builder Warranty



**SCAN TO VISIT OUR WEBSITE  
FOR MORE FLOOR PLAN INFO**



Disclaimer: Please note the floor plan is for illustrative purposes and is to be used as a guide only. The illustrations may include upgrades and optional features. Final square feet, bedrooms and bathrooms may vary from what is indicated here.