

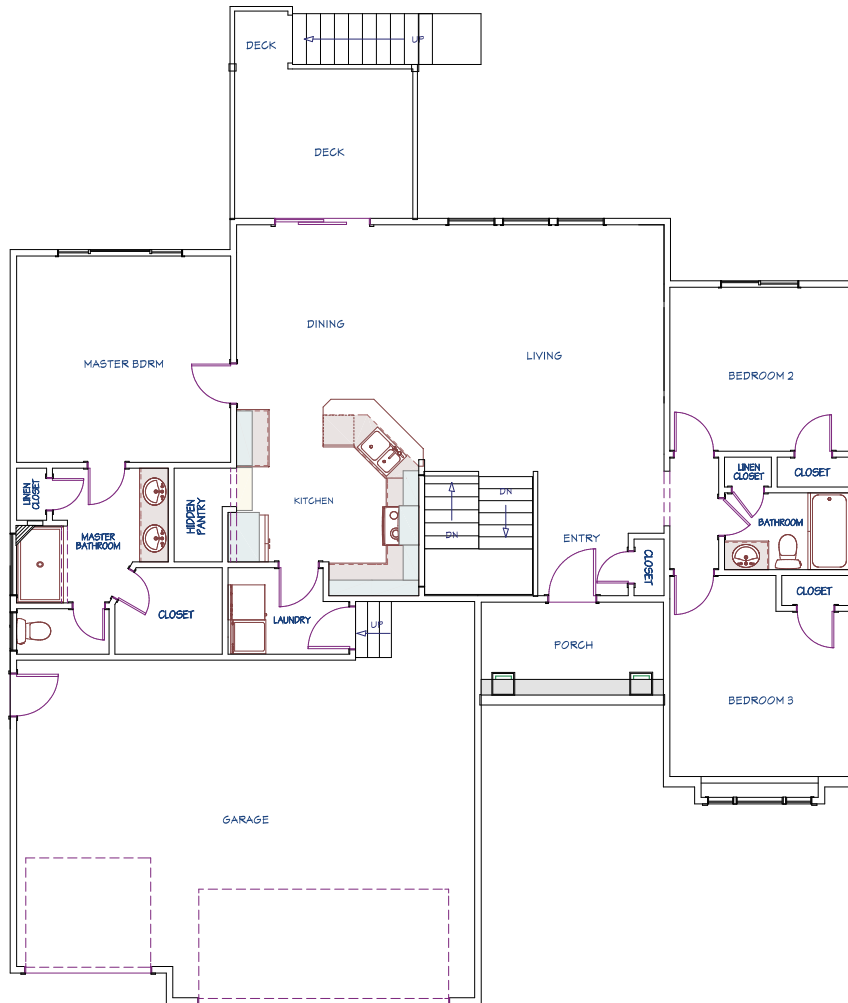
# GEORGETOWN PLAN

## MAIN FLOOR

**1,503**  
SQ. FT.

**3**  
BEDROOMS

**2**  
BATHROOMS

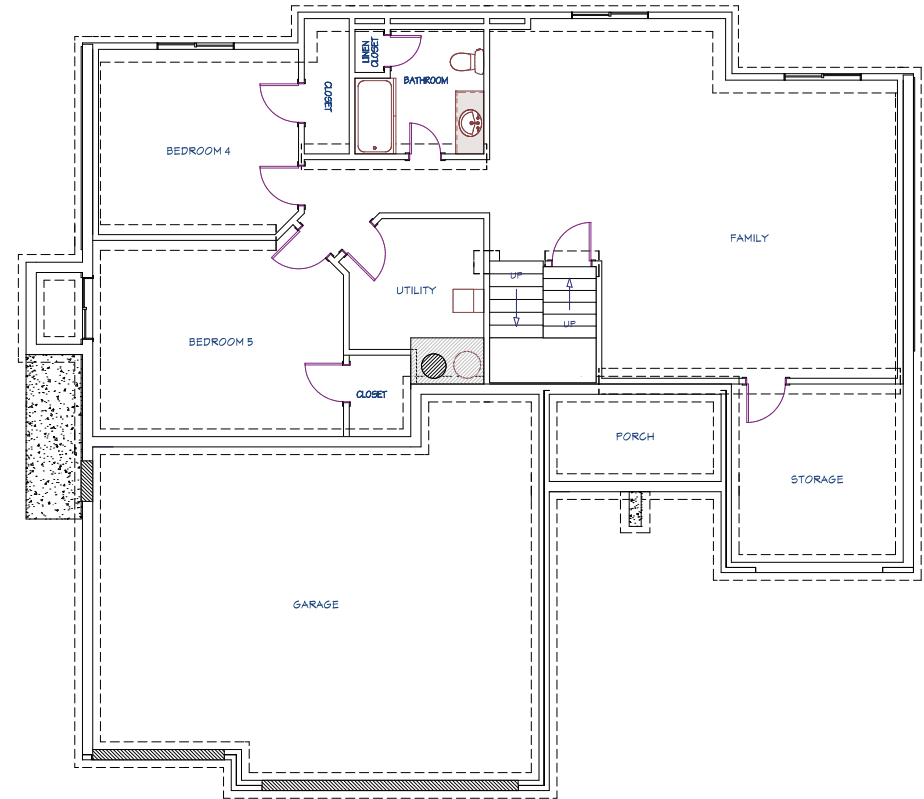


## POSSIBLE BASEMENT

**1,239**  
FINISHED SQ. FT.

**2**  
BEDROOMS

**1**  
BATHROOM



### FEATURES

- Open Floor Plan
- 10 ft. Ceilings in Main Living & Master Suite
- Stainless Steel Appliances
- Large "Hidden" Walk-In Pantry
- Walk-In Master Closet with Off-Season Storage
- Dedicated Storage Throughout
- Multiple Healthy Home & Smart Home Features
- Passive Radon Vent
- 1-Year Builder Warranty



MILLERFAMILYHOMES.COM

Disclaimer: Please note the floor plan is for illustrative purposes and is to be used as a guide only. The illustrations may include upgrades and optional features. Final square feet, bedrooms and bathrooms may vary from what is indicated here.

**GEORGETOWN**  
ARCHITECTURAL STYLES

STYLE A



STYLE B



STYLE C



MILLERFAMILYHOMES.COM

SCAN TO VISIT OUR WEBSITE  
FOR MORE FLOOR PLAN INFO



Disclaimer: Please note the floor plan is for illustrative purposes and is to be used as a guide only. The illustrations may include upgrades and optional features. Final square feet, bedrooms and bathrooms may vary from what is indicated here.