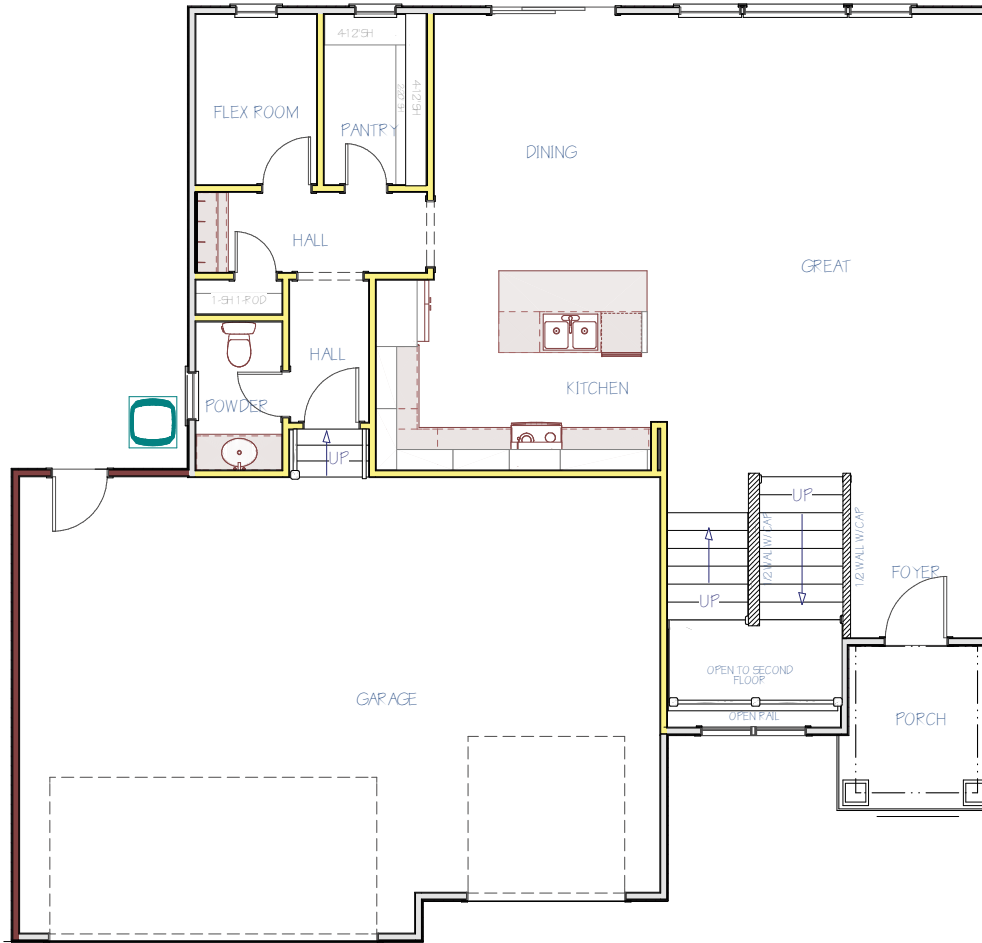


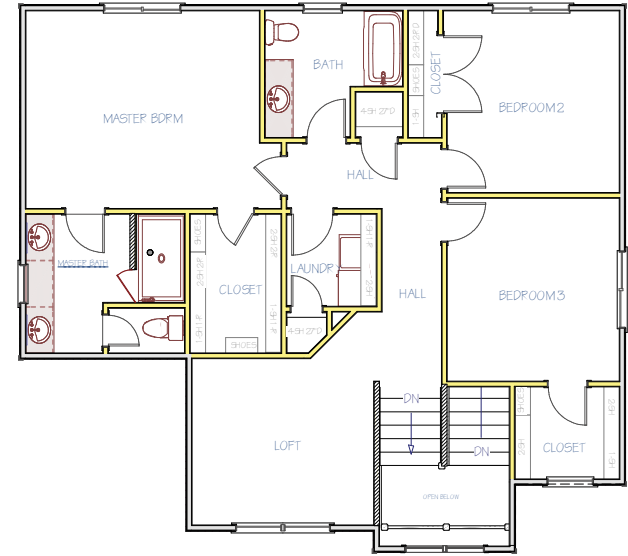
MAIN FLOOR

974
SQ. FT. | 1/2
BATHROOM



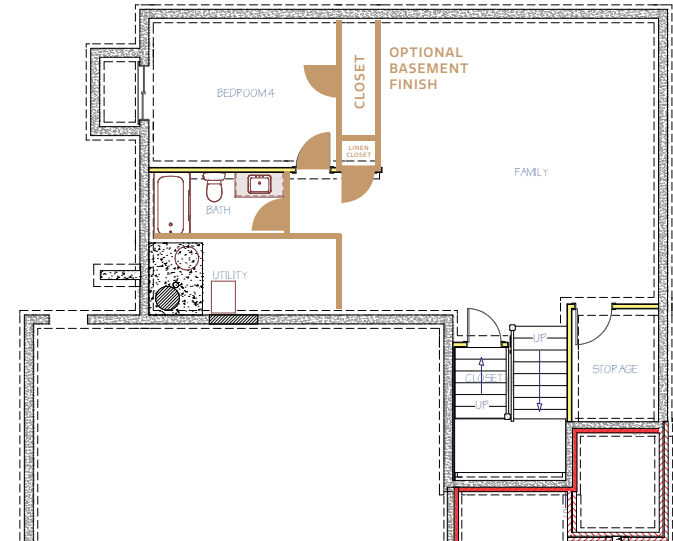
2ND FLOOR

1,120
SQ. FT. | 3
BEDROOMS | 2
BATHROOMS



POSSIBLE BASEMENT

1,088
FINISHED SQ. FT. | 1
BEDROOM | 1
BATHROOM



LEAWOOD DETAILS

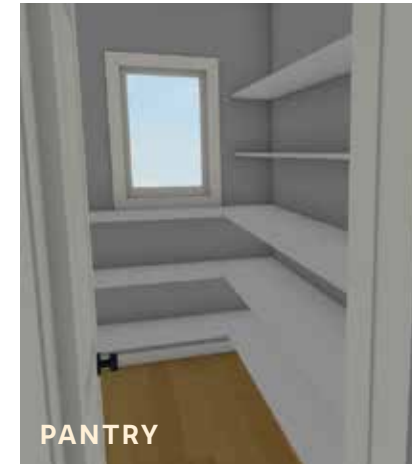
STYLES



FEATURES

- Unique Sprawling Made-For-Life Open-Concept Two Story Plan
- Massive Great Room With Windowed Staircase Feature
- Additional Living or Flexible Space With The Upstairs Loft Space
- Third Living Space In The Basement
- Great Kitchen & Counter Space Complete with a Large Walk-In Pantry
- Flex Room is a Perfect Use-As-You-Choose Space: Office, Yoga Den, Play Room
- Family-Friendly Drop Zone & Closet In Hall Off Owner's Entry from Garage
- Large Powder Bath Off Owner's Entry
- Walk-In Master Closet
- Laundry On Second Floor with Bedrooms
- Multiple Healthy Home & Smart Home Features
- Upgrade to a Side-Entry Garage Depending Upon Homesite
- 1-Year Builder Warranty

INTERIOR EXAMPLES



SCAN TO VISIT OUR WEBSITE
FOR MORE FLOOR PLAN INFO



Disclaimer: Please note the floor plan is for illustrative purposes and is to be used as a guide only. The illustrations may include upgrades and optional features. Final square feet, bedrooms and bathrooms may vary from what is indicated here.