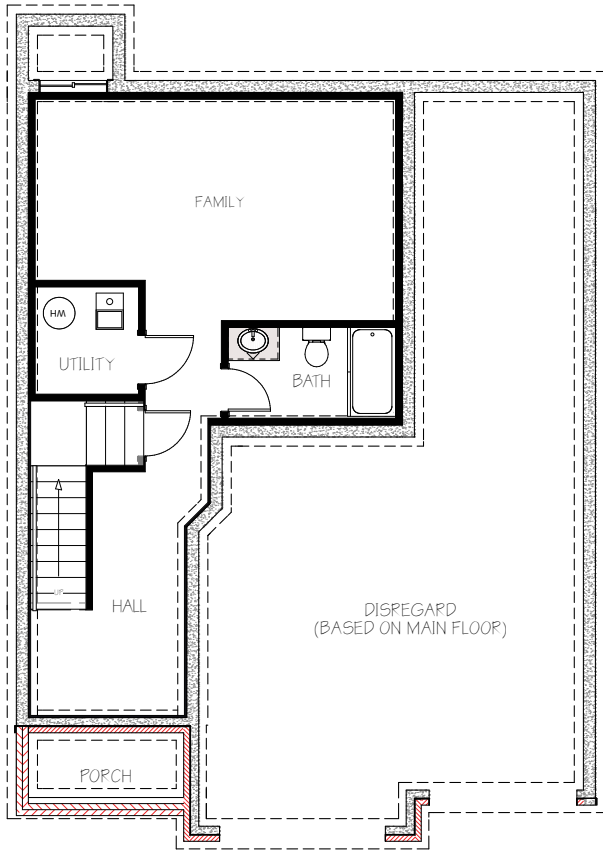


MAPLE
PLAN

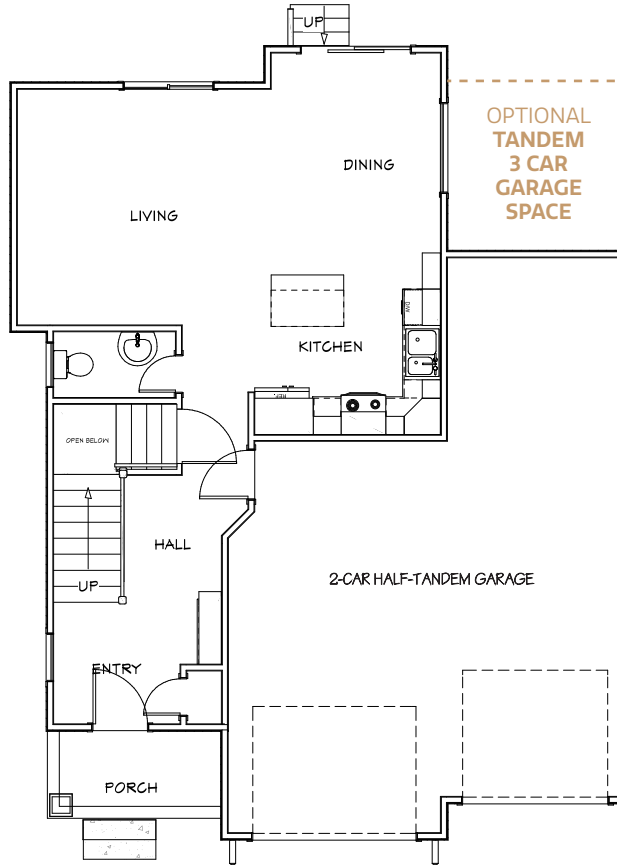
POSSIBLE BASEMENT

626
FINISHED SQ. FT. | **1**
BEDROOM | **1**
BATHROOM



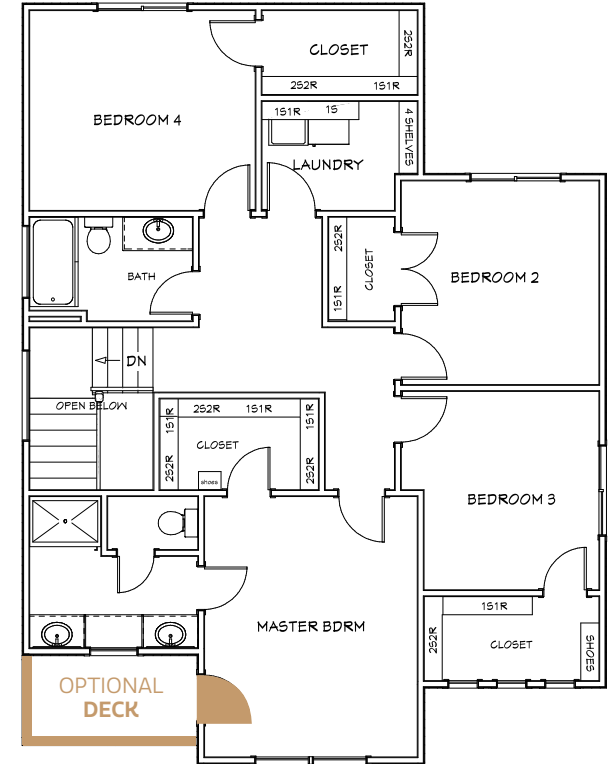
MAIN FLOOR

657
SQ. FT. | **1/2**
BATHROOM



2ND FLOOR

1,088
SQ. FT. | **4**
BEDROOMS | **2**
BATHROOMS



MILLERFAMILYHOMES.COM

Disclaimer: Please note the floor plan is for illustrative purposes and is to be used as a guide only. The illustrations may include upgrades and optional features. Final square feet, bedrooms and bathrooms may vary from what is indicated here.

MAPLE ARCHITECTURAL STYLES

TRADITIONAL



PRAIRIE STYLE



FEATURES

- Unique Architectural Styles to Choose.
- 2.5 Car Garage Provides a Flexible Space for a Tool Bench, Workout Space or Storage & Can Be Upgraded to a 3 Car Tandem Garage.
- Optional Dedicated Drop Zone.
- Family-Friendly Second Floor with Bedrooms Close Together.
- Laundry on Same Level as Bedrooms.
- Large Master Suite Complete with a Walk-In Master Closet, Private Commode & Optional Deck.
- Walk-In Closets in Every Bedroom.
- Basement Can Function as an Additional Family Room or an Office, Playroom & More! Option to Add Doors & a Closet for a 5th Bedroom!
- Dedicated Storage Spaces Throughout!
- Zoned Multi-Level Accomodating HVAC System.
- Multiple Healthy Home & Smart Home Features.
- Passive Radon Vent.
- 1-Year Builder Warranty.



[MILLERFAMILYHOMES.COM](https://millerfamilyhomes.com)

**SCAN TO VISIT OUR WEBSITE
FOR MORE FLOOR PLAN INFO**



Disclaimer: Please note the floor plan is for illustrative purposes and is to be used as a guide only. The illustrations may include upgrades and optional features. Final square feet, bedrooms and bathrooms may vary from what is indicated here.