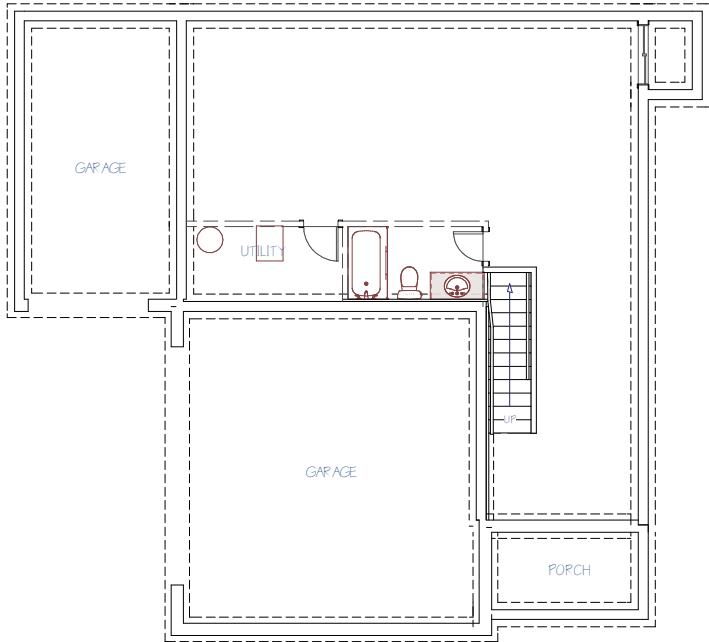


**MENDOZA
PLAN**

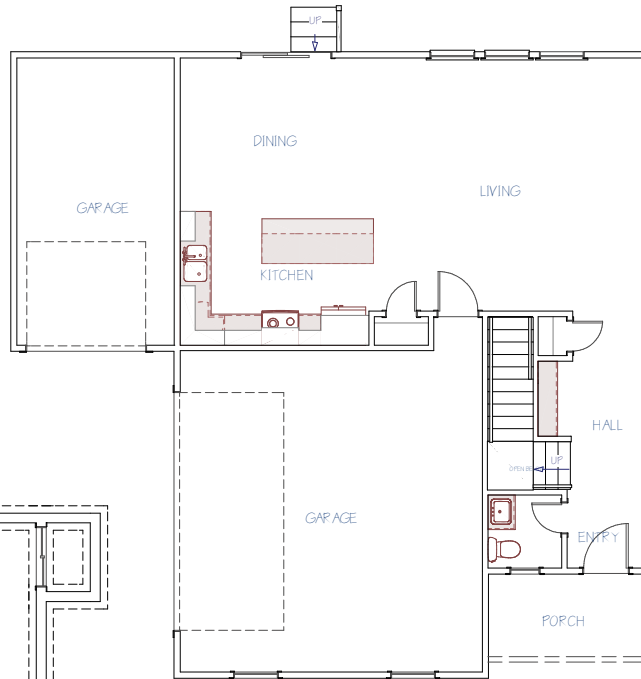
POSSIBLE BASEMENT

708
FINISHED SQ. FT. | **1**
FAMILY ROOM | **1**
BATHROOM



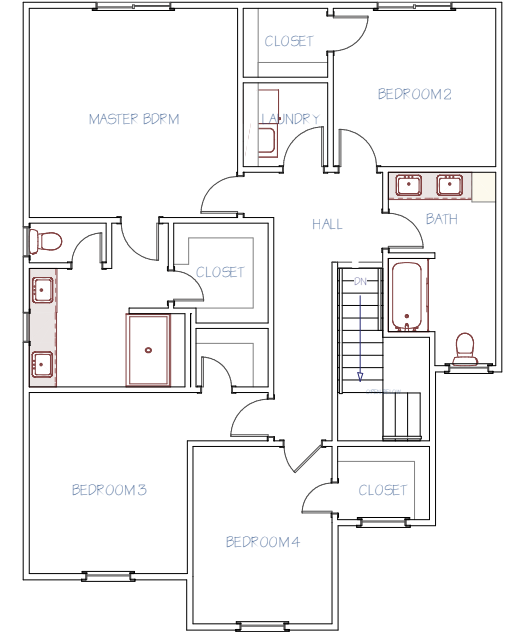
MAIN FLOOR

769
SQ. FT. | **1/2**
BATHROOM



2ND FLOOR

1137
SQ. FT. | **4**
BEDROOMS | **2**
BATHROOMS



MILLERFAMILYHOMES.COM

Disclaimer: Please note the floor plan is for illustrative purposes and is to be used as a guide only. The illustrations may include upgrades and optional features. Final square feet, bedrooms and bathrooms may vary from what is indicated here.

MENDOZA DETAILS

MODERN FARMHOUSE



FEATURES

- Unique Open-Concept Two Story Plan
- 3 Car Carriage-Style Garage
- Large Kitchen Island & Pantry
- Family-Friendly Second Floor
- Laundry Room on 2nd Floor with Bedrooms
- Large Master Suite Complete with a Walk-In Master Closet
- Walk-In Closets in Every Bedroom
- Large Secondary Bathroom with Double Vanity
- Second Potential Living Space In The Basement
- Two-Story Accommodating HVAC System
- Multiple Healthy & Smart Home Features
- Passive Radon Vent
- 1-Year Builder Warranty



MILLERFAMILYHOMES.COM

SCAN TO VISIT OUR WEBSITE
FOR MORE FLOOR PLAN INFO



Disclaimer: Please note the floor plan is for illustrative purposes and is to be used as a guide only. The illustrations may include upgrades and optional features. Final square feet, bedrooms and bathrooms may vary from what is indicated here.