

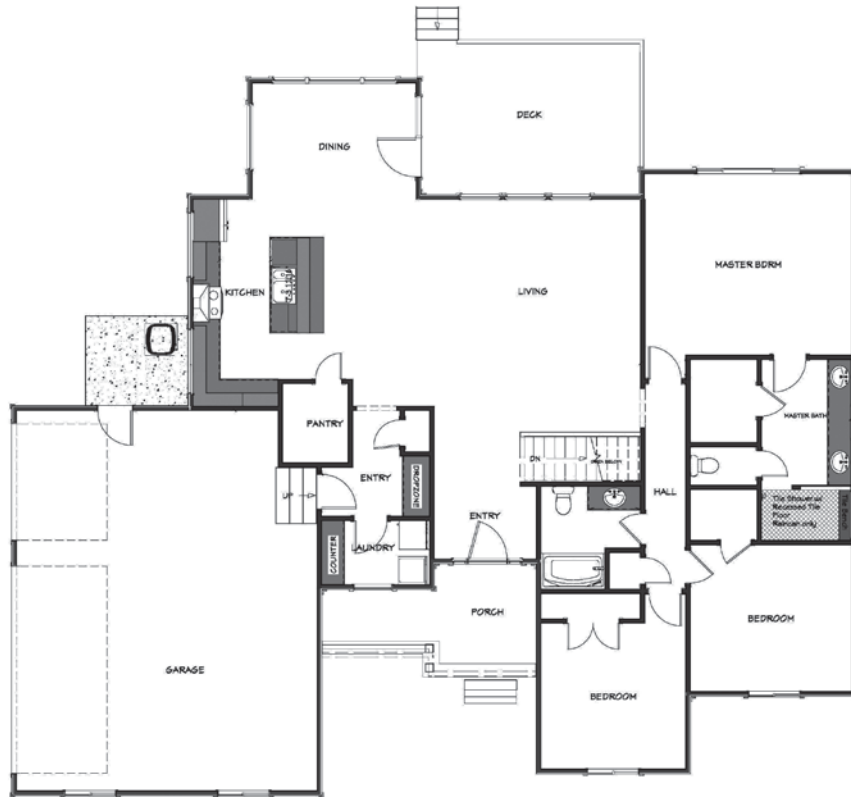
**RIVIERA  
PLAN**

**MAIN FLOOR**

**1,852**  
SQ. FT.

**3**  
BEDROOMS

**2**  
BATHROOMS

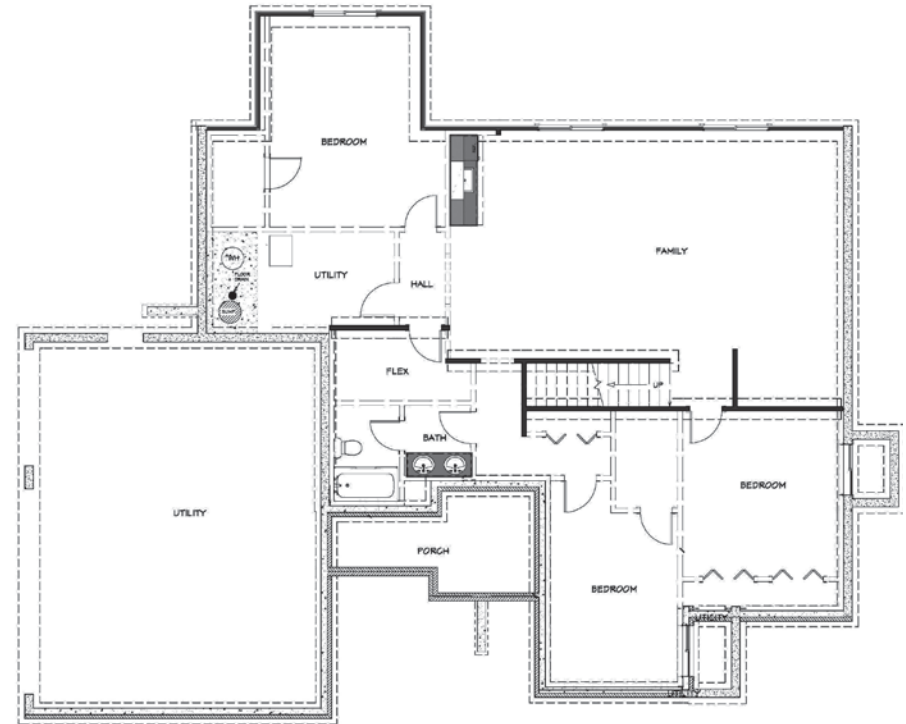


**POSSIBLE BASEMENT**

**1,572**  
FINISHED SQ. FT.

**3**  
BEDROOMS

**1**  
BATHROOM



**FEATURES**

- 3 Car Side-Entry Garage
- Great Curb Appeal & Large Front Porch
- Dedicated Drop Zone In Garage Entry
- Open-Concept Floor Plan
- Spacious Kitchen & Walk-In Pantry
- Great Suite Features a Walk-In Shower & Walk-In Closet with Off-Season Rack
- Healthy & Smart Home Features
- 1-Year Builder Warranty



MILLERFAMILYHOMES.COM

**SCAN TO VISIT OUR WEBSITE  
FOR MORE FLOOR PLAN INFO**



Disclaimer: Please note the floor plan is for illustrative purposes and is to be used as a guide only. The illustrations may include upgrades and optional features. Final square feet, bedrooms and bathrooms may vary from what is indicated here.