

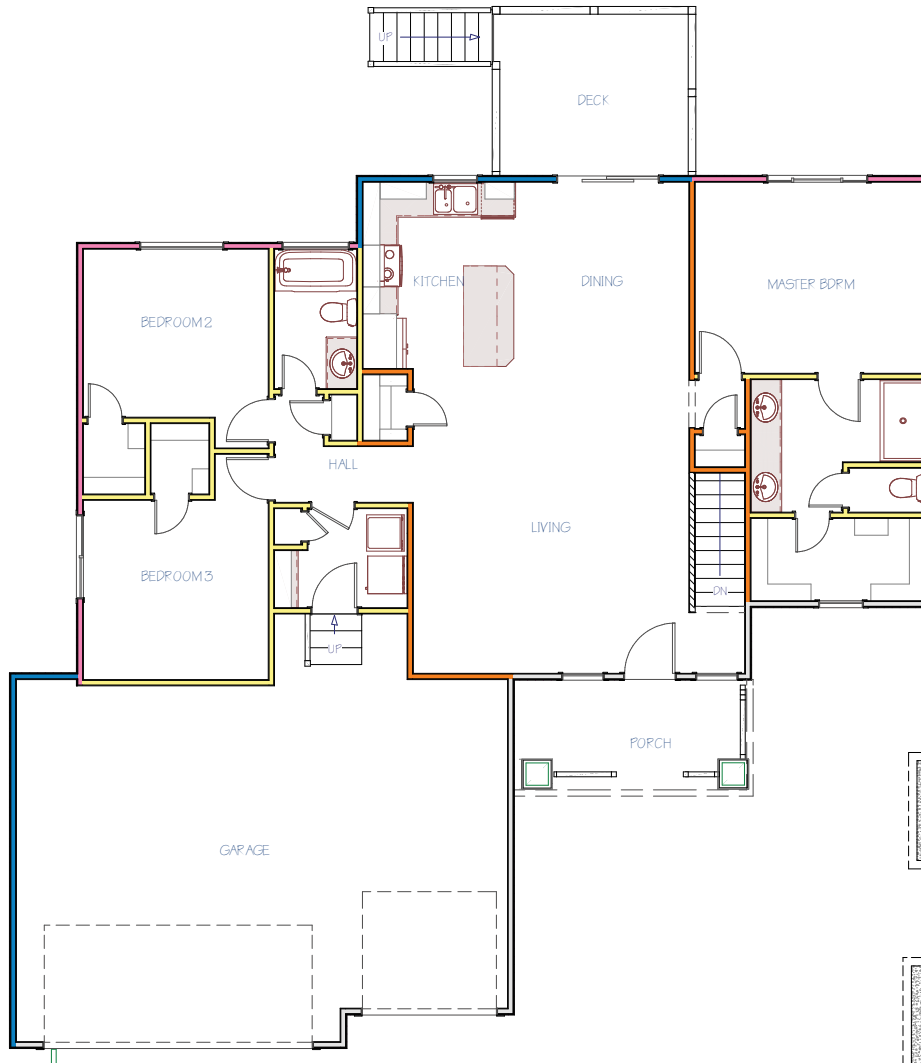
# ROSEWOOD PLAN

## MAIN FLOOR

**1,396**  
SQ. FT.

**3**  
BEDROOMS

**2**  
BATHROOMS



## FEATURES

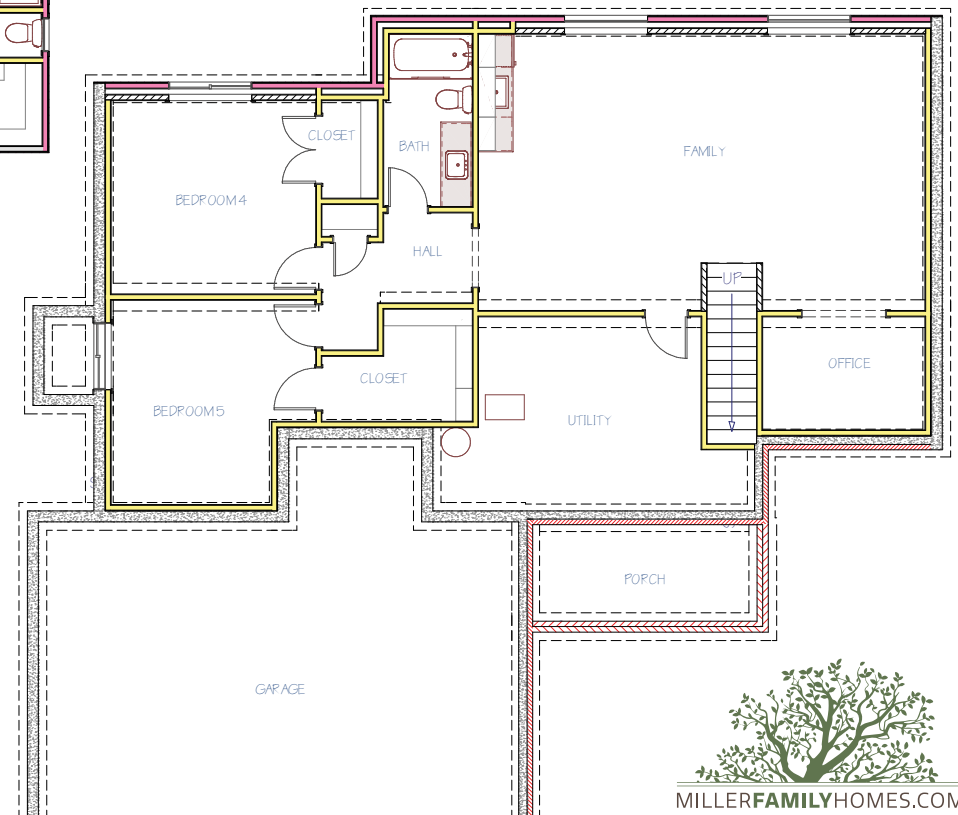
- Open Floor Plan & 10 ft. Ceilings in Main Living Area
- Kitchen Features a Large Island & Walk-In Pantry
- Kitchen Sink Window Overlooks Back Yard
- Large Master Suite Boasts a Walk-In Shower, Private Commode and Large Walk-In Closet
- Walk-In Closets in Every Bedroom
- Dedicated Storage Spaces Throughout
- Multiple Healthy Home & Smart Home Features
- 1-Year Builder Warranty

## POSSIBLE BASEMENT

**1,078**  
FINISHED SQ. FT.

**2**  
BEDROOMS

**1**  
BATHROOM



Disclaimer: Please note the floor plan is for illustrative purposes and is to be used as a guide only. The illustrations may include upgrades and optional features. Final square feet, bedrooms and bathrooms may vary from what is indicated here.

**ROSEWOOD**  
ARCHITECTURAL STYLES

**TRADITIONAL**



**PRAIRIE STYLE**



**CRAFTSMAN**



  
[MILLERFAMILYHOMES.COM](http://MILLERFAMILYHOMES.COM)

**SCAN TO VISIT OUR WEBSITE  
FOR MORE FLOOR PLAN INFO**



Disclaimer: Please note the floor plan is for illustrative purposes and is to be used as a guide only. The illustrations may include upgrades and optional features. Final square feet, bedrooms and bathrooms may vary from what is indicated here.