

STOCKTON SIDE LOAD
PLAN

MAIN FLOOR

1,660
SQ. FT.

3
BEDROOMS

2
BATHROOMS



FEATURES

- Open Concept Main Floor
- 3 Car Side-Entry Style Garage
- Main Floor Laundry Room & Drop Zone Off Garage Entry
- Large Walk-In Pantry
- Walk-In Master Closet With Off-Season Storage
- Large Second Living Space In The Basement
- Dedicated Storage Space
- Multiple Healthy Home & Smart Home Features
- 1-Year Builder Warranty

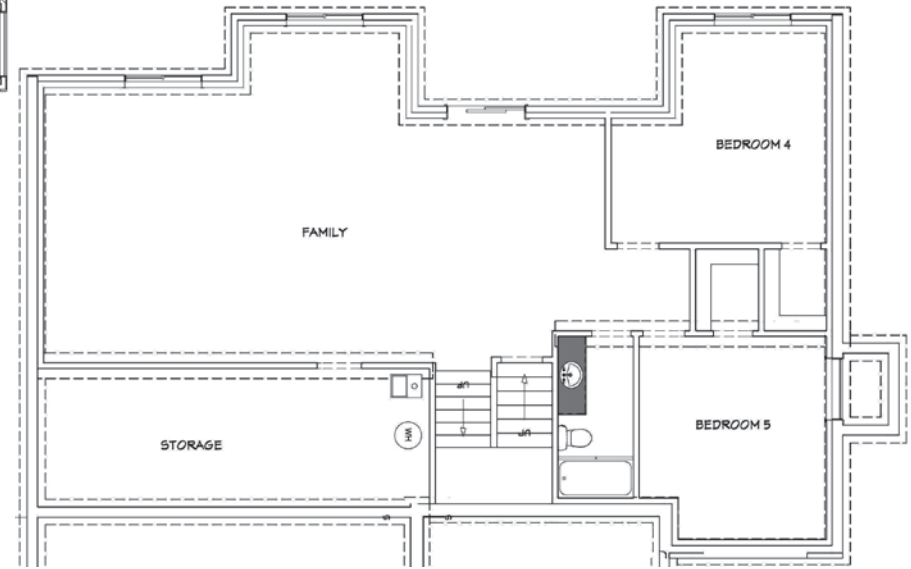


POSSIBLE BASEMENT

1,271
FINISHED SQ. FT.

2
BEDROOMS

1
BATHROOM



SCAN TO VISIT OUR WEBSITE
FOR MORE FLOOR PLAN INFO



Disclaimer: Please note the floor plan is for illustrative purposes and is to be used as a guide only. The illustrations may include upgrades and optional features. Final square feet, bedrooms and bathrooms may vary from what is indicated here.