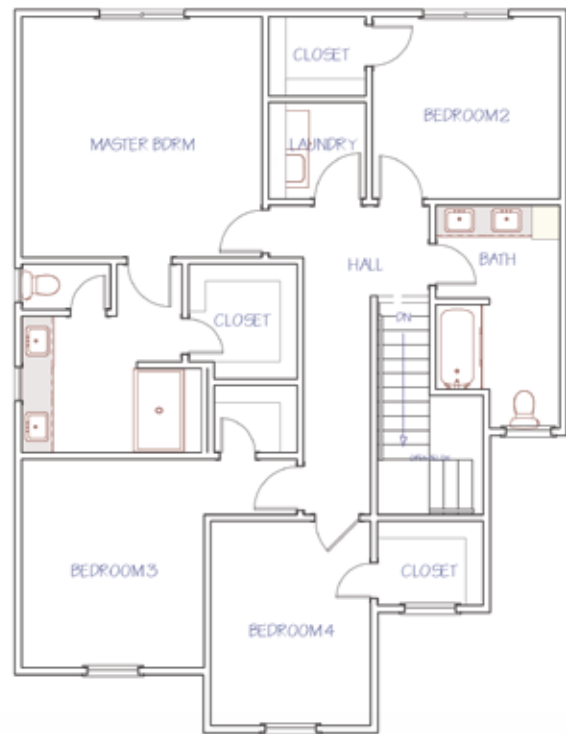


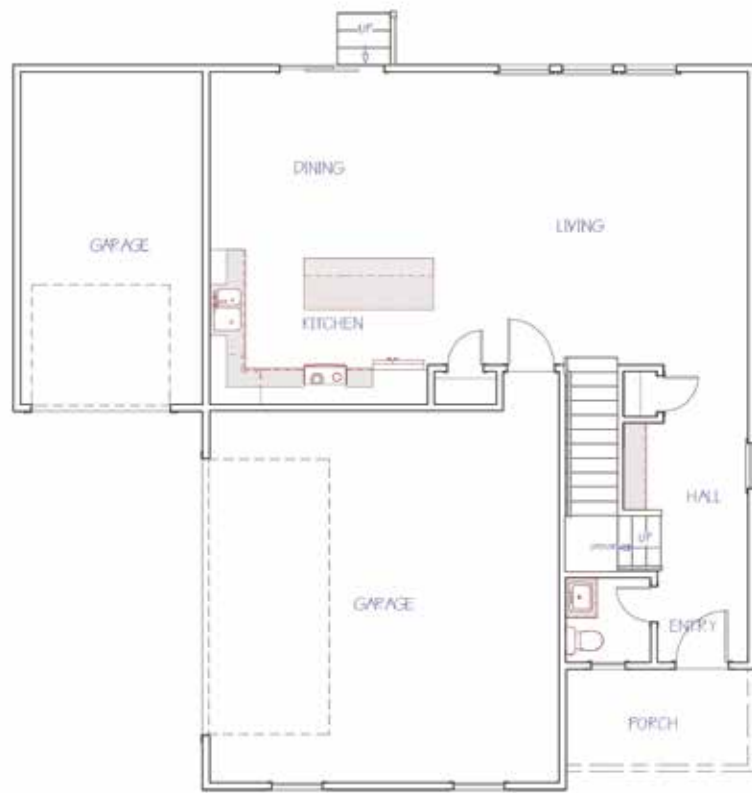
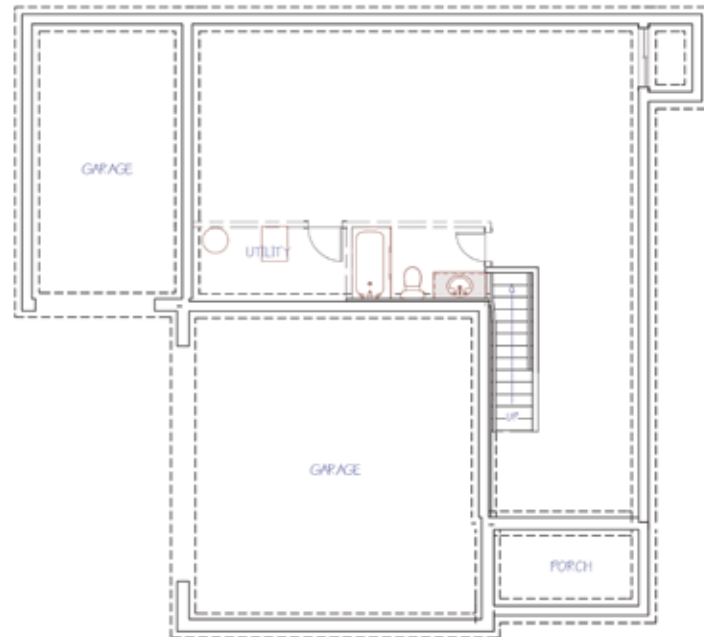
2ND FLOOR LAYOUT

1,168

2nd Floor Sq.Ft.



THE MENDOZA  
Floor Plan



POSSIBLE BASEMENT LAYOUT

631

Possible Finished Basement Sq.Ft.  
Family Room or An Additional Bedroom  
Additional Bathroom

MAIN FLOOR LAYOUT

770

Main Floor Sq.Ft.



Designer Series Home  
+ Included Luxury Options



2741 S. Lark Ct.  
Wichita, KS 67215



MENDOZA  
Floor Plan

4  
Bedrooms

2.5  
Bathrooms

3  
Car Garage

1,938  
Total Finished Sq.Ft.

Why You Will Love This Home

- Irrigation Well, Sprinkler System & Sod Included
- Enhanced Outdoor Living w/ Covered Composite Deck
- Granite & Quartz Countertops Throughout
- Wood Laminate in Entry, Living, Dining & Kitchen
- Luxury Kitchen Features and Finishes
- Designer Master Suite Features a Walk-In Tile Shower, Private Commode, Walk-In Closet & Luxury Finishes
- Dedicated Drop Zone
- Every Bedroom Features a Large Walk-In Closet
- Features: Energy Efficient Pella® Windows, Honeywell® Wi-Fi Thermostat, Chamberlain® myQ® Smart Garage Door Opener, Better Indoor Air Quality & a Cooktop Vented to the Outside
- Unfinished View-Out Basement
- 1-Year Builder Warranty

The Community Features:

- Salt Water Swimming Pool
- Playground
- Large Stocked Pond
- Goddard Schools
- West Wichita Shopping
- Convenient Location



Disclaimer: The information contained herein is deemed reliable but cannot be guaranteed as to its accuracy. Current prices may change without notice and differ from what is indicated here. Floor plans, photos and graphics are for illustrative purposes and are only intended to be used as a guide. Illustrations may include upgrades and optional features. All information including square footage, bedrooms, bathroom and dimensions may vary from what is indicated here. We recommend to the buyer that any information of special interest, should be obtained through independent verification.

Scott Darrenkamp  
NEW HOME SPECIALIST

C | (316) 250.4122  
ScottD@MillerFamilyHomes.com



Contact Your New Home Specialist To Learn More: Scott Darrenkamp • (316) 250.4122 • ScottD@MillerFamilyHomes.com



Bellmont II



Kitchen



Back Splash—Statutario Matte 2"



Manhattan Gray

2741 S LARK CT - PAINT EXTERIOR

- BODY COLOR: BACKDROP SW7025
- TRIM: ALABASTER SW7008
- ACCENT: STONE LION SW7507 PEAKS & GARAGE DOORS
- ROOKWOOD DARK RED SW2801 FRONT DOOR & SHUTTERS



BRICK NATCHEZ TRACE



photo courtesy of - Miller Family Homes Inc - millerfamilyhomes.com

Exterior Paint Selections



Brownstone 606  
Timberline Smooth



Laminate Sunset strip



Interior & Exterior Door Hardware

DESIGNER  
Details



Back Splash- Kinetic Mink

Hall Bathroom

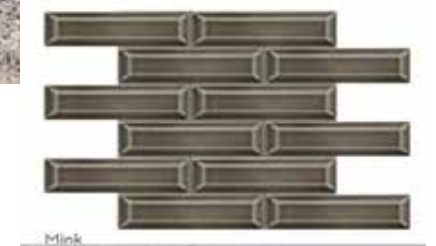


Floor - Tile Denova Harlem

Espresso Belmont II



Himalaya White



Back Splash- Kinetic Mink

Owner's Bathroom

Floor - Tile Potenza Gray



Espresso Belmont



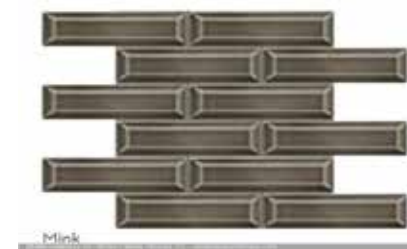
Counter Top-Himalaya White



Shower Wall-Tile -Potenza Gray



Interior Lighting Package



Mink



CLIXX HANDLE

2x HANDLE

2x HANDLE

