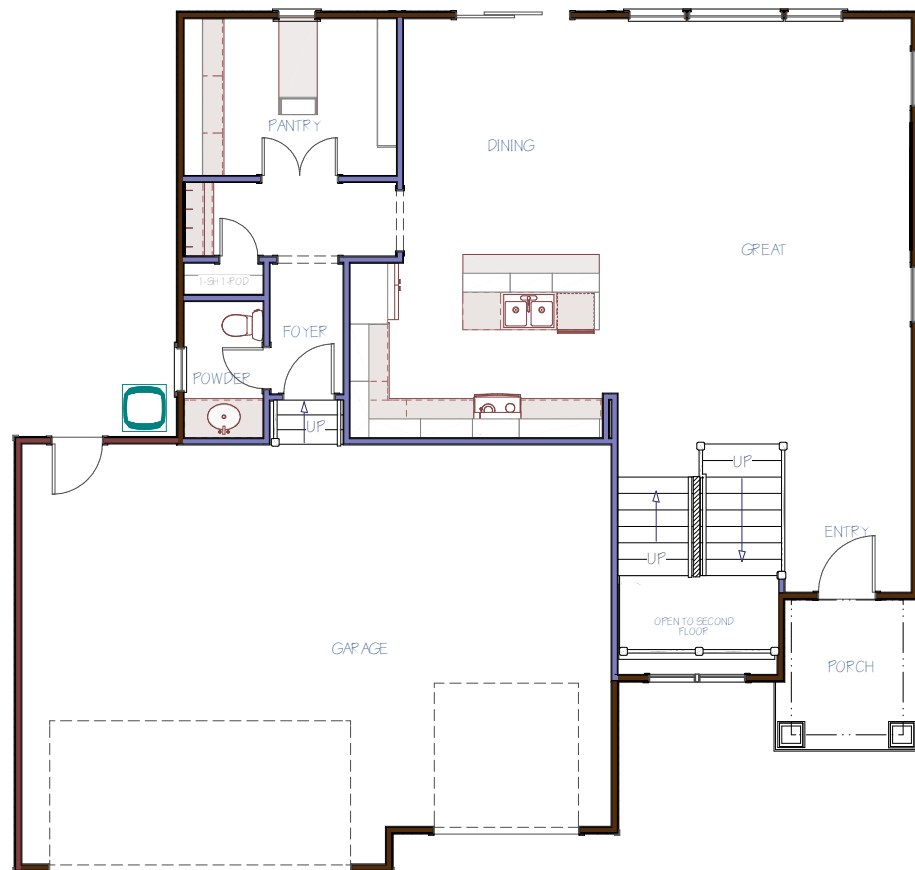
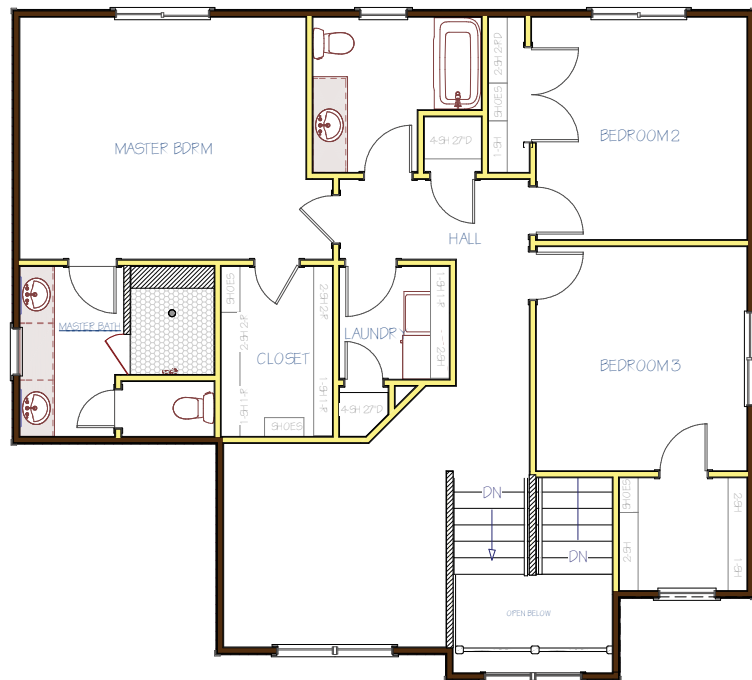
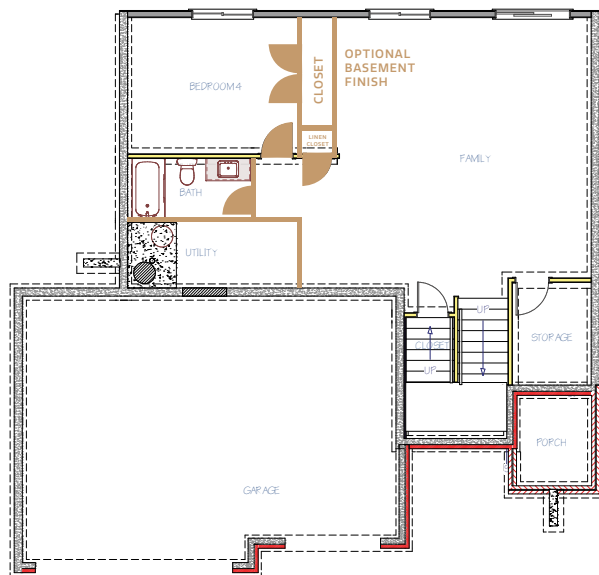


2ND FLOOR LAYOUT
1,115
2nd Floor Sq.Ft.



THE LEAWOOD
BUTLER'S PANTRY
Floor Plan

POSSIBLE BASEMENT LAYOUT
1,080
Possible Finished Basement Sq.Ft.
Family Room + An Additional Bedroom
Additional Bathroom



MAIN FLOOR LAYOUT
1,060
Main Floor Sq.Ft.



Designer Series Home
+ Included Luxury Options



714 S. Clear Creek St.
Wichita, KS 67230



LEAWOOD
Floor Plan

3
Bedrooms

2.5
Bathrooms

3
Car Garage

2,175
Total Finished Sq.Ft.

Why You Will Love This Home

- Designer Curb Appeal with Craftsman Aesthetics
- Irrigation Well, Sprinkler System & Sod Included
- Covered Composite Deck & Walk-Out Patio
- Loaded with Designer Details: Quartz Countertops, Wood Laminate & Tile Floors, Decorative Drop Zone, Built-In's & More
- Luxury Kitchen Appliances, Features & Finishes
- Unique, Luxury Butler's Pantry Features Work Spaces + Storage
- The Large Suite Features a Luxury Full-Tile Walk-In Shower, Large Vanity & Large Walk-In Closet
- Unfinished Walk-Out Basement
- Features: Energy Efficient Pella® Windows, Honeywell® Wi-Fi Thermostat, Chamberlain® myQ® Smart Garage Door Opener, 92% Energy Efficient Furnace with Better Indoor Air Quality & a Cooktop Vented to the Outside
- 1-Year Builder Warranty

Community Benefits

- Community Pool
- Walking Paths
- Established Trees
- Large Stocked Ponds
- East Wichita Shopping
- Convenient Location



Disclaimer: The information contained herein is deemed reliable but cannot be guaranteed as to its accuracy. Current prices may change without notice and differ from what is indicated here. Floor plans, photos and graphics are for illustrative purposes and are only intended to be used as a guide. Illustrations may include upgrades and optional features. All information including square footage, bedrooms, bathroom and dimensions may vary from what is indicated here. We recommend to the buyer that any information of special interest, should be obtained through independent verification.

Scott Darrenkamp
NEW HOME SPECIALIST

C | (316) 250.4122
ScottD@MillerFamilyHomes.com



Contact Your New Home Specialist To Learn More: **Scott Darrenkamp** • (316) 250.4122 • ScottD@MillerFamilyHomes.com

DESIGNER Details

BATHROOM B-SPLASH



SHOWER FLOOR



BATHROOM COUNTERTOP

BATHROOM FLOORS



BATH, PANTRY & KITCHEN CABS

Paint: Pure White SW7005
Gable Arch brackets
Garage Arbor
Porch Posts

Garage Door Accessory
Hardware installed

714 CC- Leewood Craftsman

- Accent: Dorian Gray SW7017
- Body: Web Grey SW7075
- Trim: Pure White SW7005



Summer Ash Brick



PLUMBING FIXTURES



RAINCAN



A211E-PUCF



PTT14019

WALLS: Repose Gray SW7015
FINISH: MATTE/ FLAT

TRIM & DOORS: PURE WHITE SW7005
FINISH: SEMI- GLOSS



Whirlpool 3.7 Cu. Ft. Microwave Hood Combination With Electronic Touch Controls WMH31017AES

APPLIANCES & MORE



Whirlpool 4.8 Cu. Ft. Gas Electric Range With The Easy-Wipe Ceramic Glass Cooktop WEE51050FS



Whirlpool Dishwasher With Fan Dry WDT730FAHZ

714 Clear Creek Interior Lighting Collection



Above Island 2 Pendants Revolute 8 Light Black Pendant (718LD4612128K) elegant collection W: 14" H: 8.7"



disk standard in living areas



Master Bath Cassius 44" Matte Black ETL Lamp (470750290)



Halls, Entry, & Laundry, Secondary Bedrooms LED Flush Mount (11071846A12) Minka-Lavary Collect. W: 13.75" H: 3.61"



Dining Room Revolute 8 Light Black Pendant (718LD4612128K) elegant collection W: 14" H: 8.7"



Butler's Pantry open shelf wall Zivy 1 Light Wall Sconce (980556-1V) BLK-BLK Golden H: 10" W: 6.4"



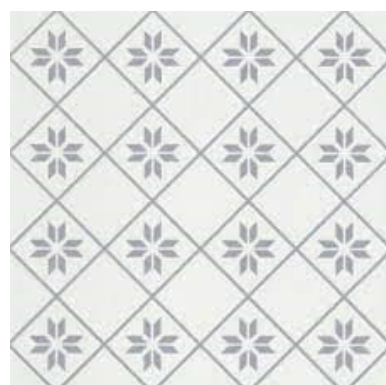
1 LIGHT BATH BAR (104011-66A) Minka-Lavary Collect. W: 6.8"



Full Bath 3 LIGHT BATH BAR (104011-66A) Minka-Lavary Collect. W: 21" H: 10.25"



Powder 2 LIGHT BATH BAR (104011-66A) Minka-Lavary Collect. W: 13.25" H: 10.25"



LAUNDRY & PANTRY FLOOR



BEDROOM CARPET



KITCHEN COUNTERS, B-SPLASH & FAUCET



LVP - KITCHEN, LIVING & DINING