



# NEWFIELD (MODERN FARMHOUSE)



14118 E. Laguna St. - Wichita, KS 67230



## Newfield Model

An Award Winning Design

Welcome to our two-time, award-winning model! This modern farmhouse Newfield floor plan is built to inspire and is loaded with designer details, features, and finishes. The featured style additions include open railing, stained and painted cabinets, and custom trim details. This home includes quartz & granite counter tops throughout, wood laminate flooring and 9' ceilings in main living areas, and a large suite features a large double vanity and a full-tile walk-in shower.

**2,615** Sq. Ft. **4** Bed **3** Bath

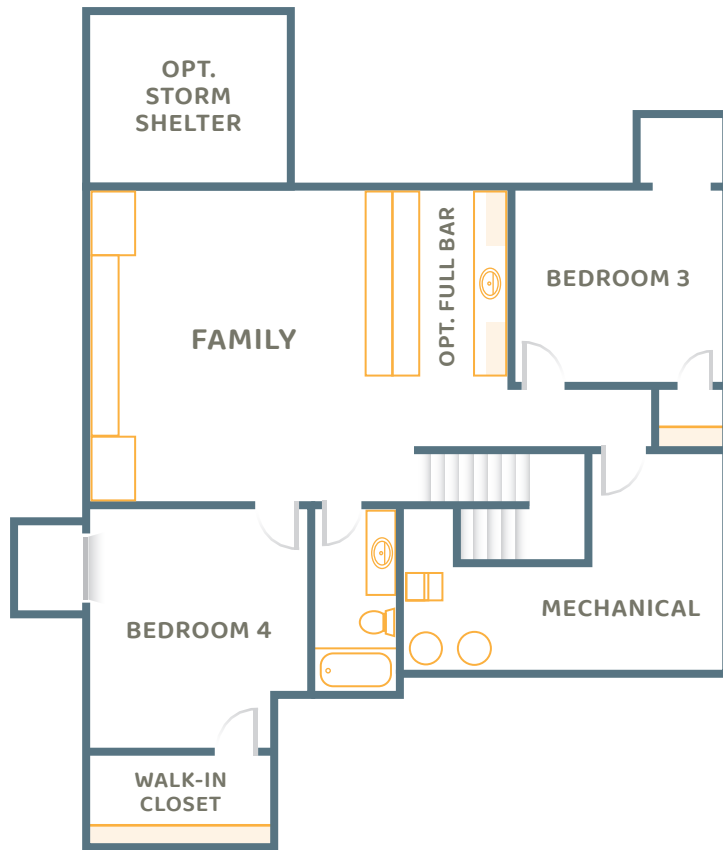
- Open-concept main floor plan w/ 3 car garage
- Finished view-out basement w/ full wet bar
- Built-In storm shelter
- Modern farmhouse-styled electric fireplace
- Dedicated storage & utility room
- Multiple healthy & smart home features

**• PRICE \$538,900**



All prices, promotions, features, options, amenities, floor plans, elevations, materials and dimensions are subject to change without notice. Marketing material may show options available, but not included on base plan. All information is deemed reliable but not guaranteed. Please ask the new home specialist for more information. ©2024 Miller Family Homes, Inc. KS Builder License #4334556

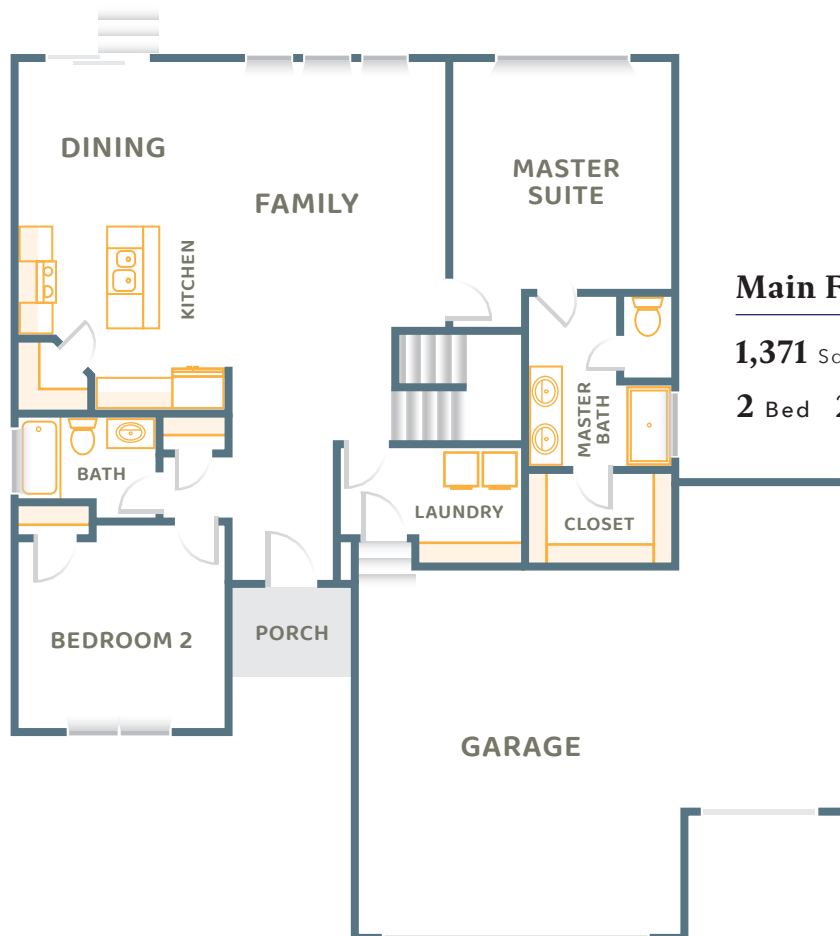
1907 South Hydraulic, Wichita, KS 67211 | 316-670-9736 | millerfamilyhomes.com



### Basement

**1,244** Sq. Ft.

**2** Bed **1** Bath



### Main Floor

**1,371** Sq. Ft.

**2** Bed **2** Bath